

Building Profile

Alabama Site Selection Database

D & S Industrial Supply Inc.

City: Thomasville County: Clarke



Building Id: 5801	
Street Address	2550 Joe Davis Industrial Blvd
Nearest City	Thomasville
Within City Limits	Yes
Zip Code	36784
Latitude	31.90035
Longitude	-87.733898
Located in Industrial Park	Yes
Park Name	Joe Davis Industrial Park
Within Enterprise Zone	Yes
Within Favored Geographic Area	
Within Renewal Community	

General Building Data	
Total Size	17,500 sq.ft.
Space Available	17,500 sq.ft.
Multi-tenant	No
Building Dimensions	
Number of Buildings	1
Number of Floors	1
Largest Production Area	10,000 sq.ft.
Office Area	2,200 sq.ft.
Building Expandable	Yes
Expandable to	27,000 sq.ft.
Floor Thickness	5 in.
Total Acreage	2
Additional Available	Yes
Ceiling Height	Eave: 16 ft. Max:
Bay Spacing	Length: Width:
Air Conditioned	Yes
Heated	Yes
Cranes	Number of Cranes: Capacity of Largest: Under Hook:
Truck Docks	Dock Level: 3 Drive In: 2
Year Built	2003
Last Expansion	
Refrigerated Area	
USDA Approved	
Sprinklers	No
Construction Material	Primary: Metal Secondary: Brick
Parking Paved	Yes
Number of Cars	25
Zoning	Light Industrial
Previous Use	Commercial
Previous Use Description	Metal Fabrication/Ind Supplies

Transportation	
Rail Service	Provider: Norfolk Southern Track Status: Adjacent Track Provider #2: Track Status: Not Specified
Waterway	Tennessee-Tombigbee Waterway Dock Facility: Port 26 to 50 miles
Nearest Commercial Air City	Mobile, AL Miles to Nearest Service: 100 mile(s)

Highways			
<u>Highway Type</u>	<u>Highway Name</u>	<u>Miles to Access</u>	<u>Four Lane</u>
Interstate	I-10	95	
Interstate	I-59	70	
Interstate	I-65	68	
Federal Highway	43	1	Yes
Federal Highway	80	43	No
Federal Highway	84	15	No

Building Profile

Alabama Site Selection Database

D & S Industrial Supply Inc.

City: Thomasville

County: Clarke

Utilities

Natural Gas

Provider: Clarke-Mobile Gas District
Status: Existing
Size of Main:
Main PSI:

Electricity

Provider(s): Alabama Power Company
Status: Existing
Amps:
Phase: 3
Voltage:

Water

Provider: City of Thomasville
Status: Existing
Size of Main: 10 in.

Telecommunications

Service Provider: AT&T
Fiber Optics: Yes
Redundancy:
xDSL Available: Yes

Sewer

Provider: City of Thomasville
Status: Existing
Size of Main: 15 in.

Price

Base Rent (Annual)

Base Rent

Sale Price

\$495,000.00

Negotiable

Yes

Date Quoted

May 5, 2010

Price Comments

General Comments

Building information is current as of 5/4/10

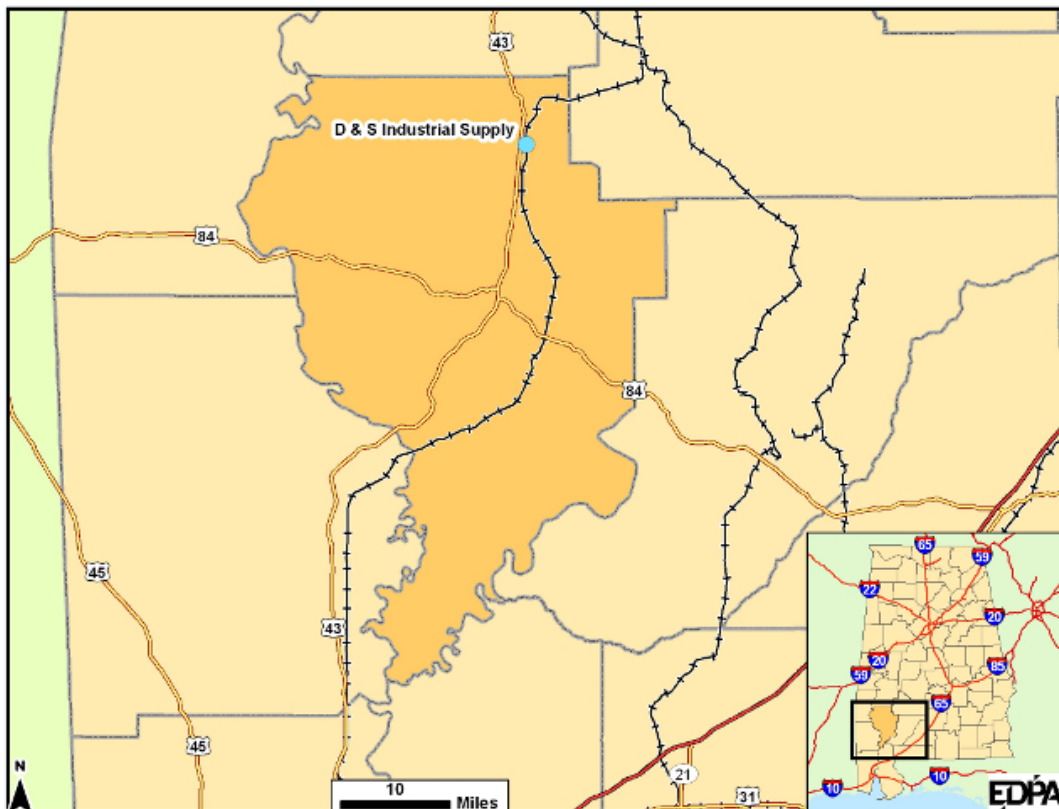
Building Profile

Alabama Site Selection Database

D & S Industrial Supply Inc.

City: Thomasville

County: Clarke



This information has been secured from sources we believe to be reliable; however, we make no representation or warranties, expressed or implied, as to the accuracy of the information.

Economic Development Partnership of Alabama
www.edpa.org