

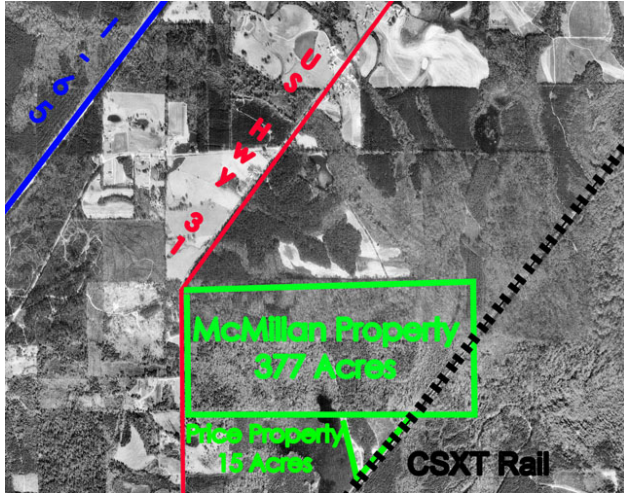
Site Profile

Alabama Site Selection Database

McMillan Property

City: Evergreen

County: Conecuh



General Site Data

Total Acres	377
Available Acres	377
Additional Available	Yes
Largest Tract	377
Smallest Tract	250
Protective Covenants	
Phase 1 Environmental	Yes
Preliminary Geotechnical:	No
Topography	Flat
Preliminary Wetlands	Yes
Assessment:	
Ecological Review:	No
Cultural Resources Review:	No
Zoning	None
Previous Use	Forest
Previous Use Description	forest

Utilities

Natural Gas

Provider: South Alabama Gas
 Status: Existing Connection
 Size of Main: 4 in.
 Main PSI: 360

Water

Provider: Fairview Water System
 Status: Existing Connection
 Size of Main: 4 in.

Sewer

Provider: Evergreen Utilities
 Status: > 1 mile
 Size of Main:

Electricity

Provider #1: Alabama Power Company
 Status: < 500ft
 Service to Property
 (Distribution):
 Transmission:
 Provider #2:

Telecommunications

Provider: AT&T
 Fiber Optics:
 Redundancy:
 xDSL Available:

Site Id: 4428

Street Address US Highway 31 South

Nearest City	Evergreen
Within City Limits	No
Zip Code	36401
Latitude	31.3773
Longitude	-87.0262
Located in Industrial Park	No
Park Name	N/A
Within Enterprise Zone	No
Within Favored Geographic Area	Yes
Within Renewal Community	Yes

Transportation

Rail Service

Provider: CSX Transportation
 Track Status: Adjacent Track
 Provider #2:
 Track Status:

Navigable Waterway Alabama River
 Dock Facility: Port > 50 miles

Nearest Commercial Air City Montgomery, AL
 Miles to Nearest Service: 78

Highways

Highway Type	Highway Name	Miles to Access	Four Lane
Interstate	I-10	55.0	
Interstate	I-65	4.8	
Federal Highway	31	0.0	No
Federal Highway	84	4.0	No

Price

Sale Price \$7,000.00 per acre

Land Lease Rate (Annual)

Negotiable? Yes

Date Quoted Oct 26, 2011

Price Comments

This information has been secured from sources we believe to be reliable; however, we make no representation or warranties, expressed or implied, as to the accuracy of the information.

Economic Development Partnership of Alabama
 www.edpa.org

Site Profile

Alabama Site Selection Database

McMillan Property

City: Evergreen

County: Conecuh

General Comments

Site information is current as of 10/26/11

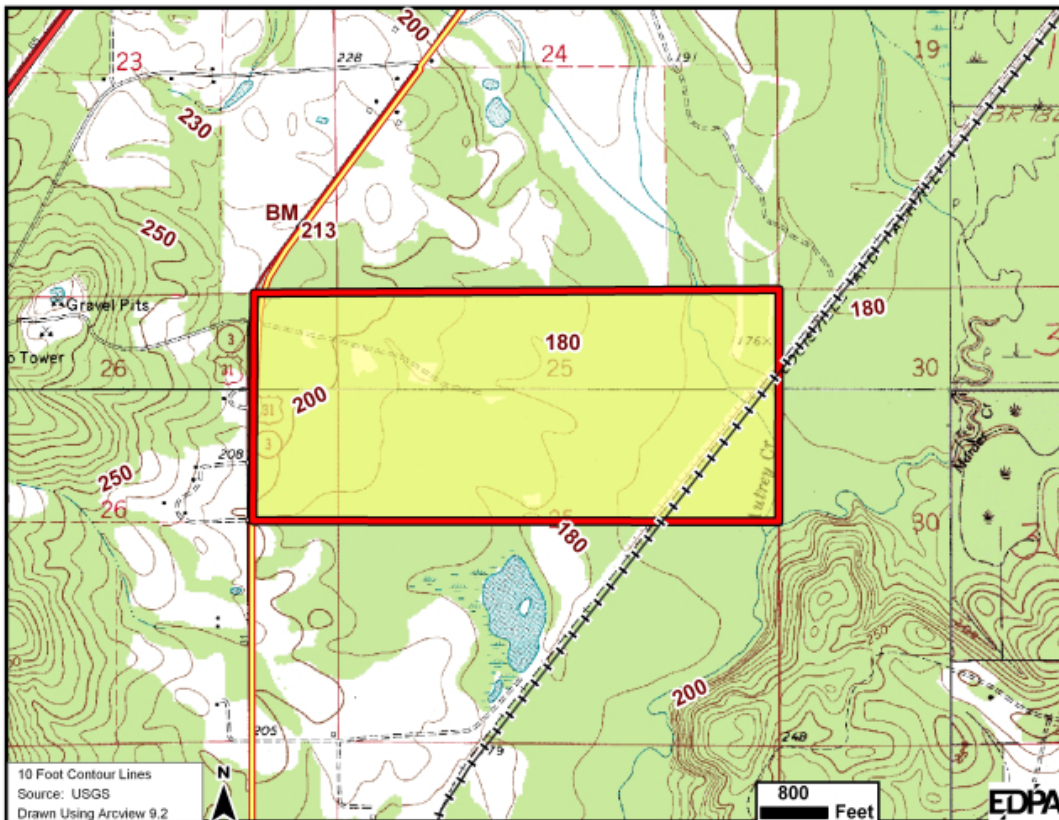
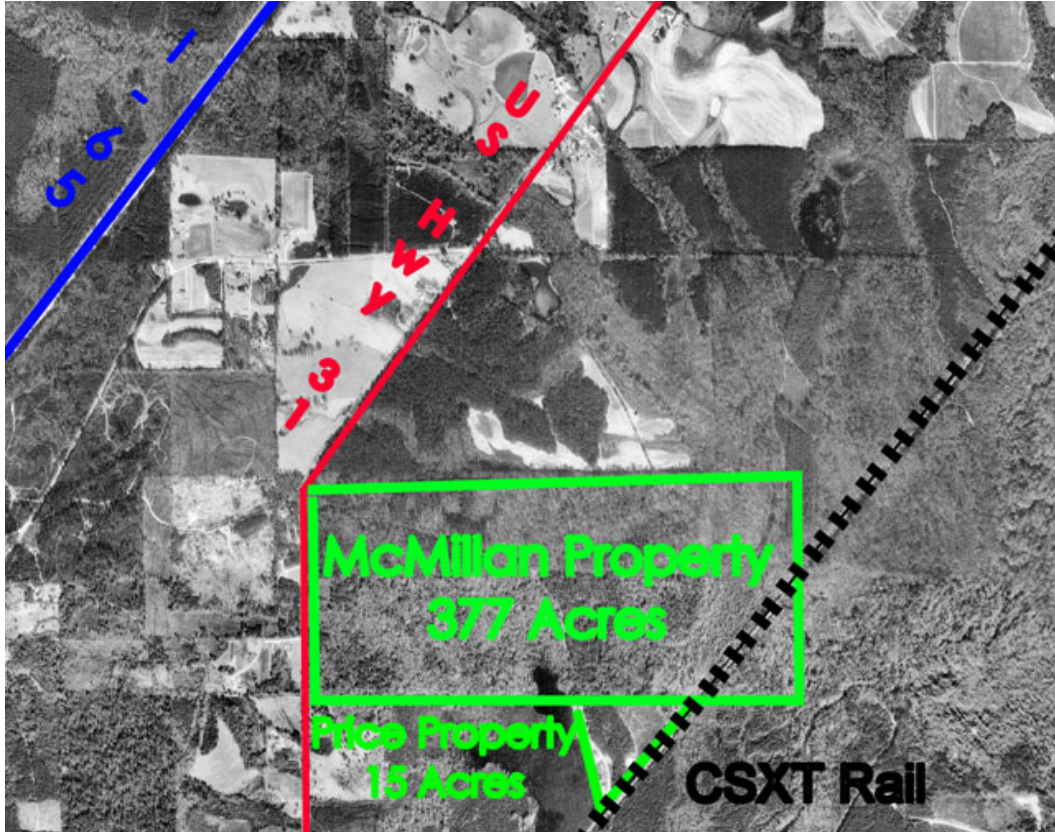
Site Profile

Alabama Site Selection Database

McMillan Property

City: Evergreen

County: Conecuh



This information has been secured from sources we believe to be reliable; however, we make no representation or warranties, expressed or implied, as to the accuracy of the information.

Economic Development Partnership of Alabama
www.edpa.org

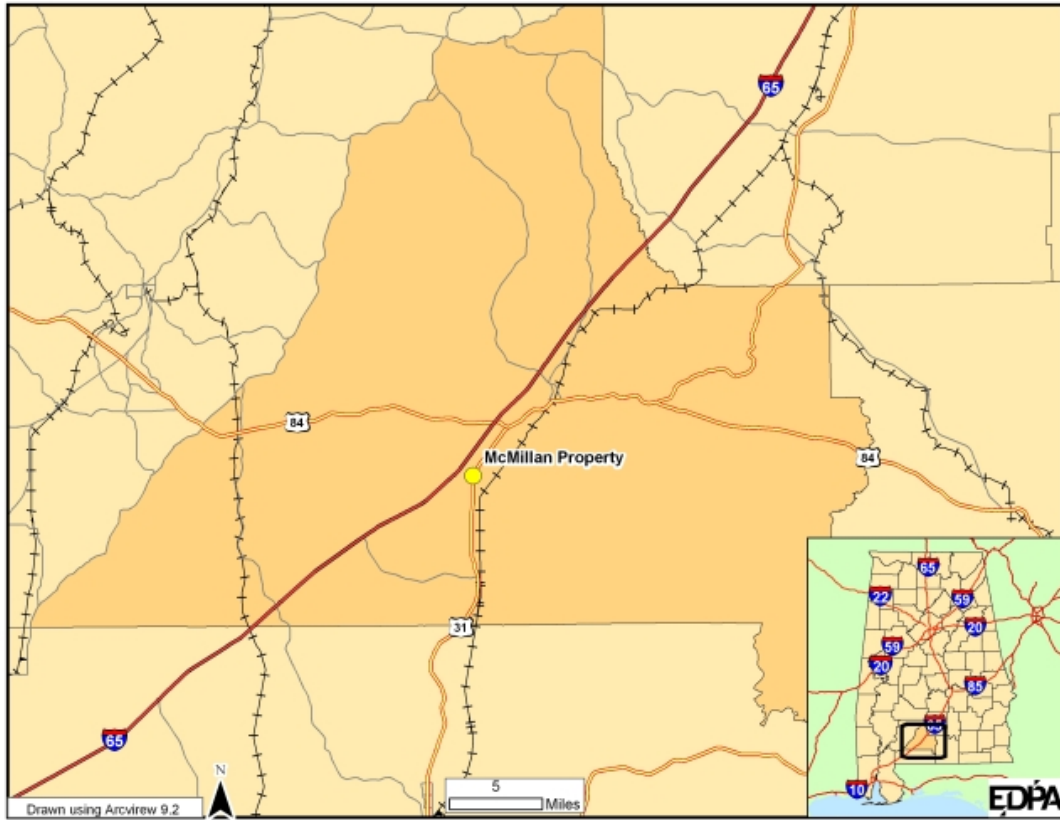
Site Profile

Alabama Site Selection Database

McMillan Property

City: Evergreen

County: Conecuh



This information has been secured from sources we believe to be reliable; however, we make no representation or warranties, expressed or implied, as to the accuracy of the information.

Economic Development Partnership of Alabama
www.edpa.org