

Site Profile

Alabama Site Selection Database

Evergreen/I-65 IP Highway Tran

City: Evergreen

County: Conecuh



Site Id: 4747

Street Address: Industrial Park Circle

Nearest City	Evergreen
Within City Limits	Yes
Zip Code	36401
Latitude	31.4495
Longitude	-86.9685
Located in Industrial Park	Yes
Park Name	Evergreen IP
Within Enterprise Zone	No
Within Favored Geographic Area	Yes
Within Renewal Community	Yes

Transportation

Rail Service

Provider:
Track Status: Not Specified
Provider #2:
Track Status:

Navigable Waterway: Alabama River
Dock Facility: Port 26 to 50 miles

Nearest Commercial Air City: Montgomery, AL
Miles to Nearest Service: 70

Highways

Highway Type	Highway Name	Miles to Access	Four Lane
Interstate	I-10	80.0	
Interstate	I-65	0.0	
Federal Highway	31	2.0	Yes
Federal Highway	84	2.0	Yes
Alabama Highway	83	0.0	Yes

Price
Sale Price: \$10,000.00 per acre

Land Lease Rate (Annual)

Negotiable? Yes
Date Quoted: Aug 4, 2011

Price Comments: Price includes removal of existing buildings

Current Industrial Tenants

Evergreen Transport, trucking and transportation; Conecuh Sausage, food processing

General Site Data

Total Acres	10
Available Acres	10
Additional Available	No
Largest Tract	10
Smallest Tract	10
Protective Covenants	Yes
Phase 1 Environmental	Yes
Preliminary Geotechnical:	Yes
Topography	Flat
Preliminary Wetlands	Yes
Assessment:	
Ecological Review:	Yes
Cultural Resources Review:	Yes
Zoning	Light Industrial
Previous Use	Industrial
Previous Use Description	Transportation

Utilities

Natural Gas

Provider: South Alabama Gas
Status: Existing Connection
Size of Main: 4 in.
Main PSI:

Water

Provider: Evergreen Utilities
Status: Existing Connection
Size of Main: 10 in.

Sewer

Provider: Evergreen Utilities
Status: Existing Connection
Size of Main: 12 in.

Electricity

Provider #1: Evergreen Utilities
Status: Existing Connection
Service to Property (Distribution): Yes
Transmission: Yes
Provider #2: Alabama Power Company

Telecommunications

Provider: AT&T
Fiber Optics: Yes
Redundancy: Yes
xDSL Available: Yes

Site Profile

Alabama Site Selection Database

Evergreen/I-65 IP Highway Tran

City: Evergreen

County: Conecuh

General Comments

Industrial Park Circle will be repaved with street improvements in late 2011. Removal of building is included in price.

Site information is current as of 8/4/11

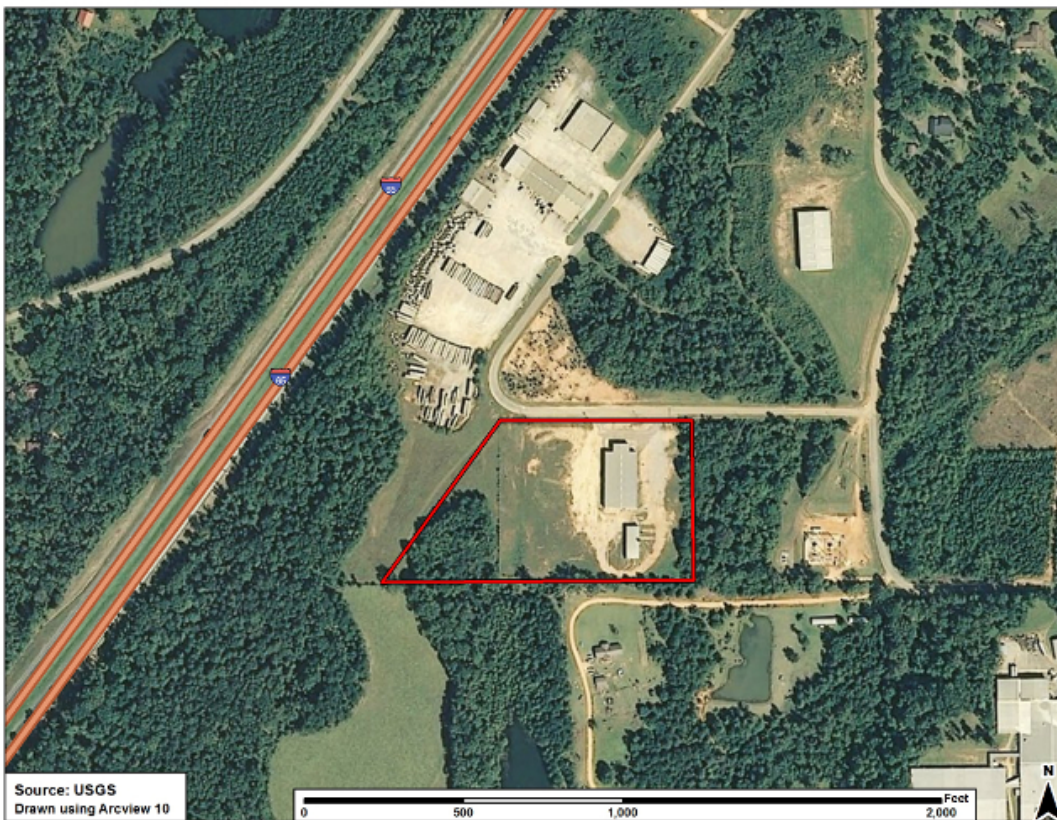
Site Profile

Alabama Site Selection Database

Evergreen/I-65 IP Highway Tran

City: Evergreen

County: Conecuh



This information has been secured from sources we believe to be reliable; however, we make no representation or warranties, expressed or implied, as to the accuracy of the information.

Economic Development Partnership of Alabama
www.edpa.org

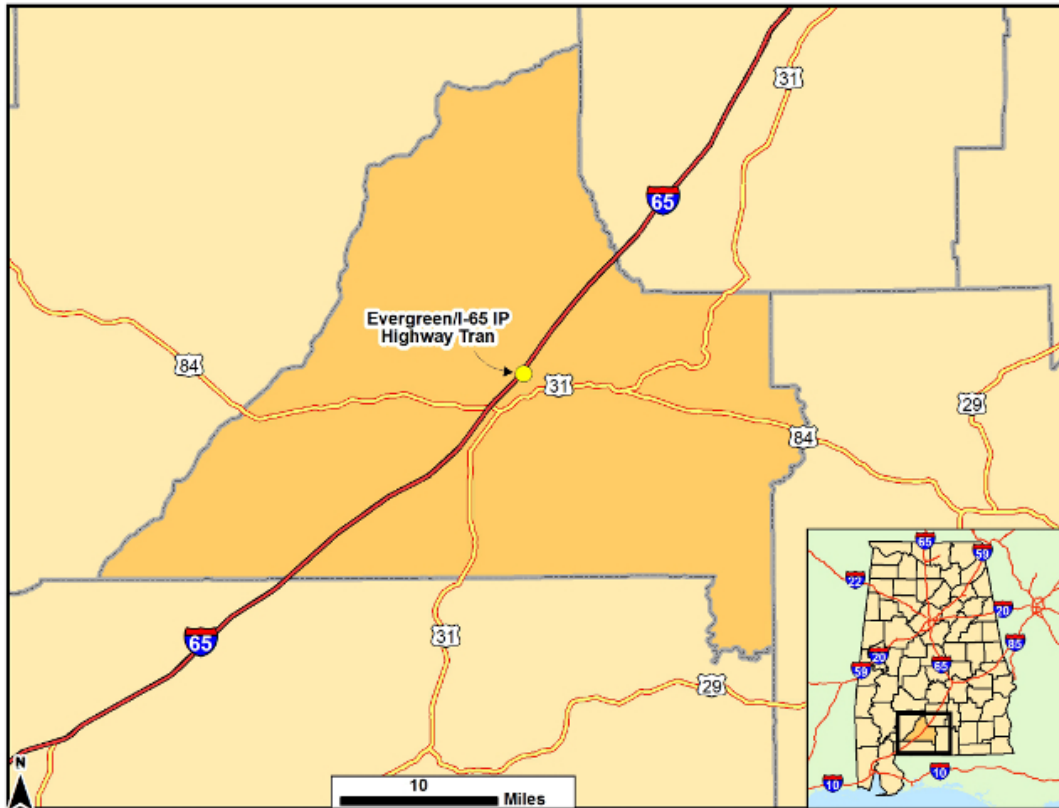
Site Profile

Alabama Site Selection Database

Evergreen/I-65 IP Highway Tran

City: Evergreen

County: Conecuh



This information has been secured from sources we believe to be reliable; however, we make no representation or warranties, expressed or implied, as to the accuracy of the information.

Economic Development Partnership of Alabama
www.edpa.org