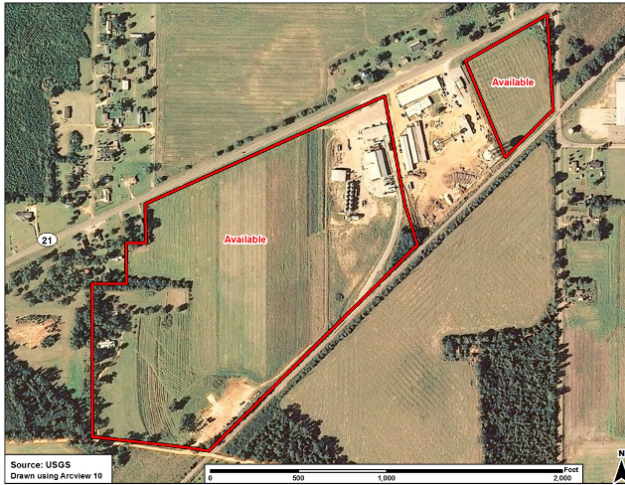


Site Profile

Alabama Site Selection Database

Grower's Supply Site

City: Frisco City County: Monroe



General Site Data

Total Acres	55
Available Acres	55
Additional Available	
Largest Tract	49
Smallest Tract	6
Protective Covenants	
Phase 1 Environmental	Yes
Preliminary Geotechnical:	
Topography	Flat
Preliminary Wetlands	No
Assessment:	
Ecological Review:	
Cultural Resources Review:	
Zoning	Business & Commercial
Previous Use	Commercial
Previous Use Description	Tractor and farm equipment

Site Id: 4748

Street Address 5239 Bowden Street

Nearest City	Frisco City
Within City Limits	Yes
Zip Code	36445
Latitude	31.4213
Longitude	-87.4172
Located in Industrial Park	No
Park Name	
Within Enterprise Zone	Yes
Within Favored Geographic Area	Yes
Within Renewal Community	

Transportation

Rail Service	Provider: A & G Railroad Co Track Status: Onto Site Provider #2: Track Status:
Navigable Waterway	Alabama River Dock Facility: Port > 50 miles
Nearest Commercial Air City	Mobile, AL Miles to Nearest Service: 88

Highways

Highway Type	Highway Name	Miles to Access	Four Lane
Interstate	I-65	23.0	
Federal Highway	84	7.0	No
Alabama Highway	21	0.0	No

Price

Sale Price \$2,645,000.00
Total

Land Lease Rate (Annual)

Negotiable?	Yes
Date Quoted	Jul 29, 2011
Price Comments	

Utilities

Natural Gas	Provider: South Alabama Gas Status: Existing Connection Size of Main: Main PSI:
Water	Provider: City of Frisco City Status: Existing Connection Size of Main:
Sewer	Provider: Septic Tank Status: Existing Connection Size of Main:
Electricity	Provider #1: Southern Pine Electric Co-op Status: Existing Connection Service to Property (Distribution): Transmission: Provider #2:
Telecommunications	Provider: Frontier Communications Fiber Optics: Redundancy: xDSL Available:

This information has been secured from sources we believe to be reliable; however, we make no representation or warranties, expressed or implied, as to the accuracy of the information.

Economic Development Partnership of Alabama
www.edpa.org

Site Profile

Alabama Site Selection Database

Grower's Supply Site

City: Frisco City

County: Monroe

General Comments

Rail spur length 1500 ft.

Site information is current as of 7/29/11

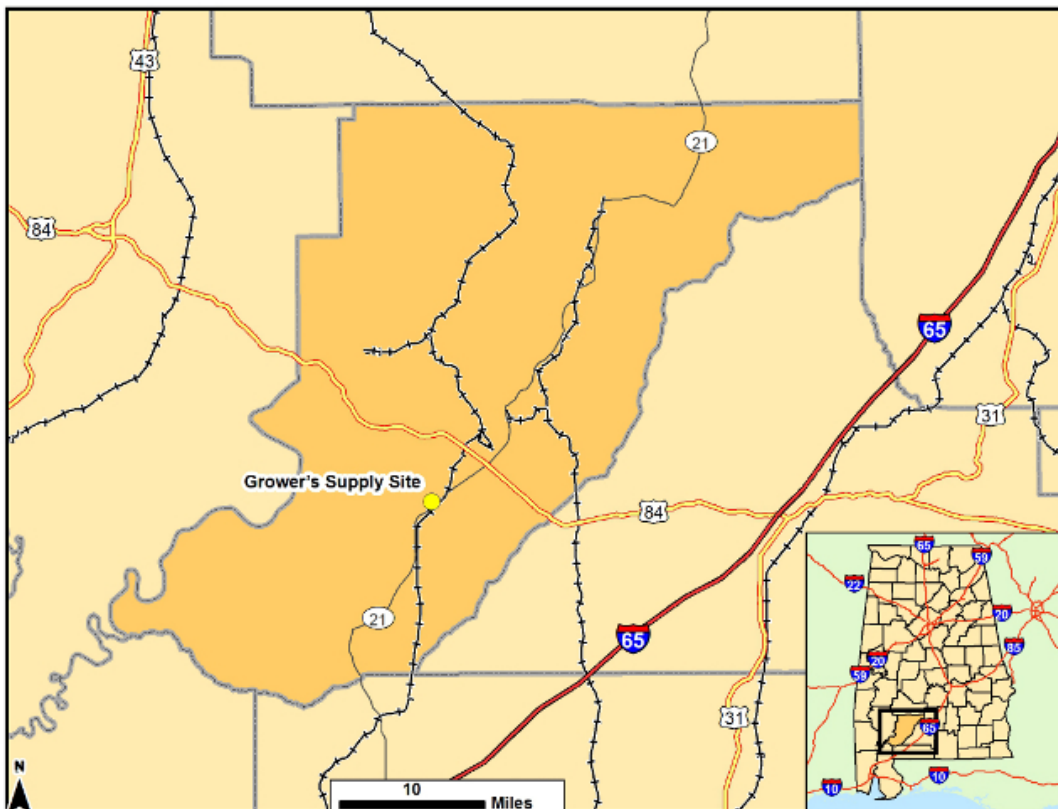
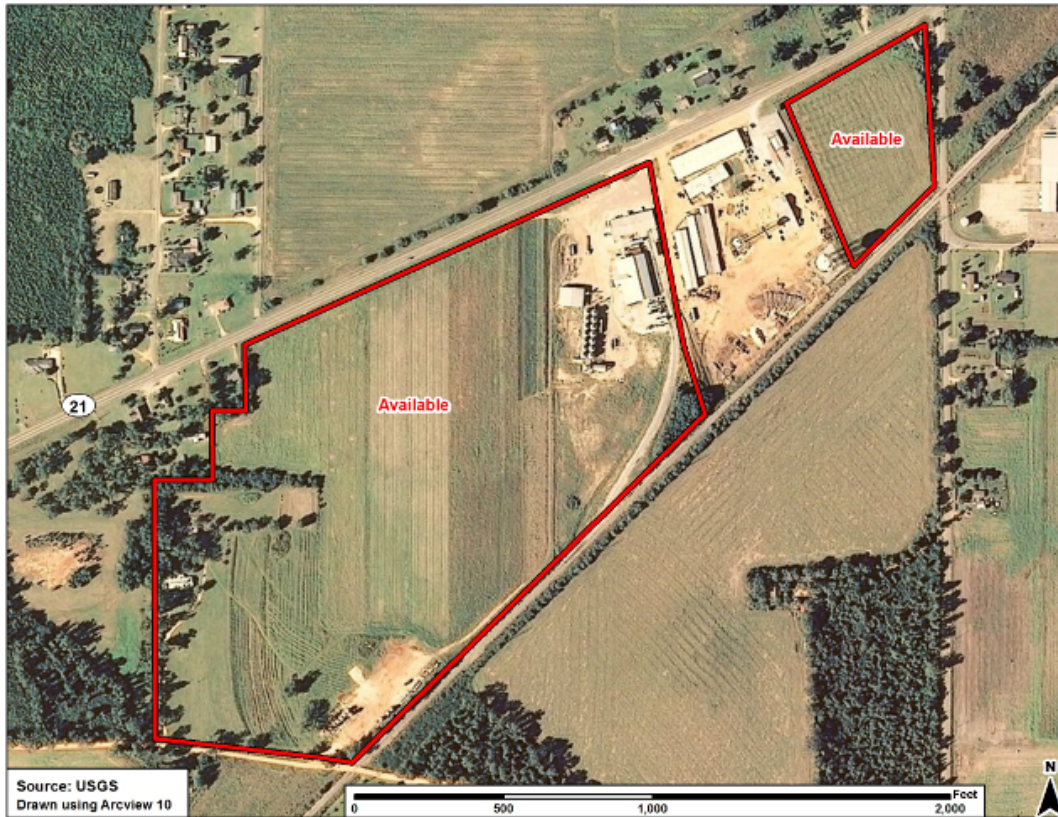
Site Profile

Alabama Site Selection Database

Grower's Supply Site

City: Frisco City

County: Monroe



This information has been secured from sources we believe to be reliable; however, we make no representation or warranties, expressed or implied, as to the accuracy of the information.

Economic Development Partnership of Alabama
www.edpa.org