

Site Profile

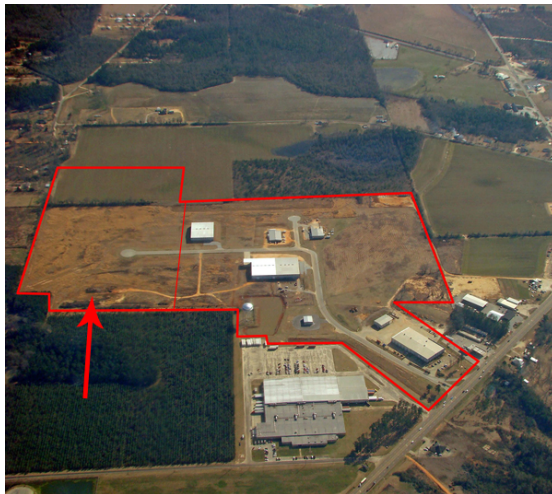


Alabama Site Selection Database

Monroeville IP East Site

City: Monroeville

County: Monroe



Site Id: 4673	
Street Address	Industrial Park Drive
Nearest City	Monroeville
Within City Limits	Yes
Zip Code	36460
Latitude	31.4738
Longitude	-87.3292
Located in Industrial Park	Yes
Park Name	Monroeville Industrial Park
Within Enterprise Zone	Yes
Within Favored Geographic Area	Yes
Within Renewal Community	Yes

Transportation

Rail Service	Provider:	
	Track Status:	Not Available
	Provider #2:	
	Track Status:	
Navigable Waterway	Alabama River	
	Dock Facility:	Not Specified
Nearest Commercial Air City	Mobile, AL	
	Miles to Nearest Service:	92

Highways

Highway Type	Highway Name	Miles to Access	Four Lane
Interstate	I-65	23.0	
Federal Highway	84	1.1	No
Alabama Highway	21	0.5	Yes
Alabama Highway	41	0.5	Yes

Price	
Sale Price	\$10,000.00 per acre
Land Lease Rate (Annual)	
Negotiable?	Yes
Date Quoted	Sep 20, 2011
Price Comments	

General Site Data

Total Acres	32
Available Acres	26
Additional Available	Yes
Largest Tract	26
Smallest Tract	26
Protective Covenants	Yes
Phase 1 Environmental	Yes
Preliminary Geotechnical:	Yes
Topography	Flat
Preliminary Wetlands Assessment:	Yes
Ecological Review:	Yes
Cultural Resources Review:	Yes
Zoning	Light Industrial
Previous Use	Agriculture
Previous Use Description	farmland

Utilities

Natural Gas	Provider: South Alabama Gas
	Status: < 1500ft
	Size of Main: 2 in.
	Main PSI: 40
Water	Provider: City of Monroeville
	Status: Existing Connection
	Size of Main: 12 in.
Sewer	Provider: City of Monroeville
	Status: Existing Connection
	Size of Main: 8 in.
Electricity	Provider #1: Alabama Power Company
	Status: < 500ft
	Service to Property (Distribution): Yes
	Transmission: No
	Provider #2:
Telecommunications	Provider: Frontier Communications
	Fiber Optics: No
	Redundancy: No
	xDSL Available: Yes

To meet the needs of industry, Alabama's economic development community is working to designate an inventory of industrial sites with sufficient site documentation for accurate, timely project evaluation. The AdvantageSite logo indicates that this property has met requirements for program designation. For more information on AdvantageSite and program requirements, visit our website.

This information has been secured from sources we believe to be reliable; however, we make no representation or warranties, expressed or implied, as to the accuracy of the information.

Economic Development Partnership of Alabama

www.edpa.org

Site Profile



Alabama Site Selection Database

Monroeville IP East Site

City: Monroeville

County: Monroe

General Comments

Site information is current as of 3/22/11

To meet the needs of industry, Alabama's economic development community is working to designate an inventory of industrial sites with sufficient site documentation for accurate, timely project evaluation. The AdvantageSite logo indicates that this property has met requirements for program designation. For more information on AdvantageSite and program requirements, visit our website.

This information has been secured from sources we believe to be reliable; however, we make no representation or warranties, expressed or implied, as to the accuracy of the information.

Economic Development Partnership of Alabama

www.edpa.org

Site Profile

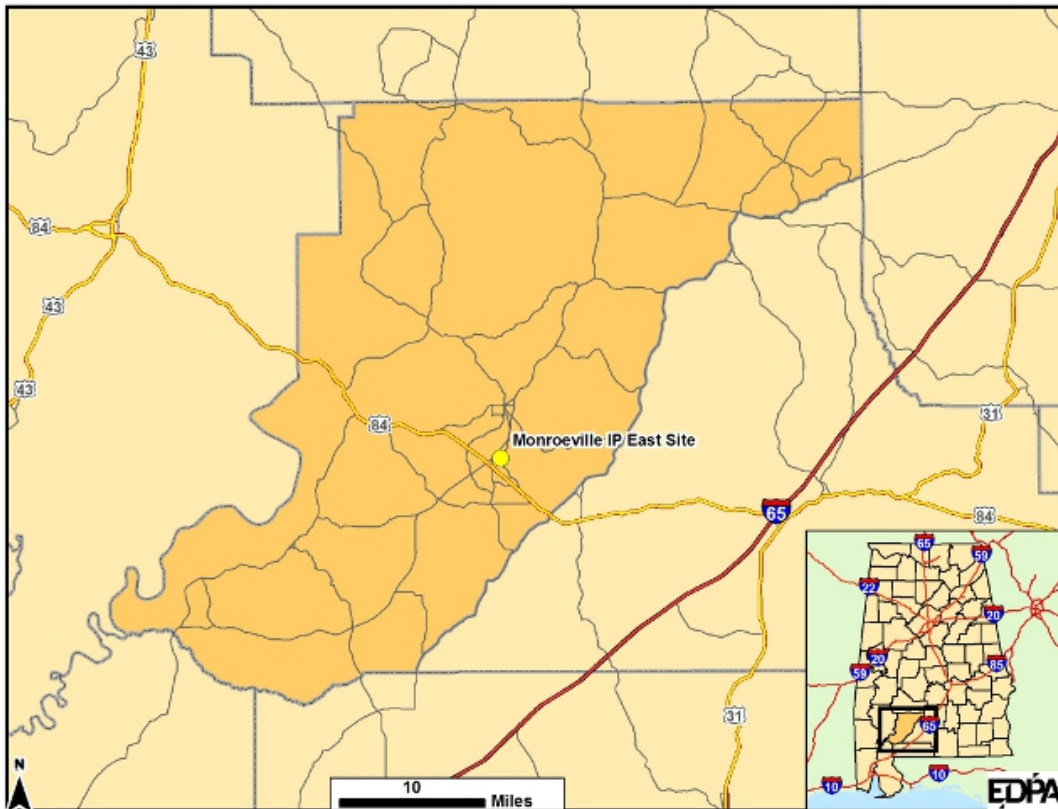
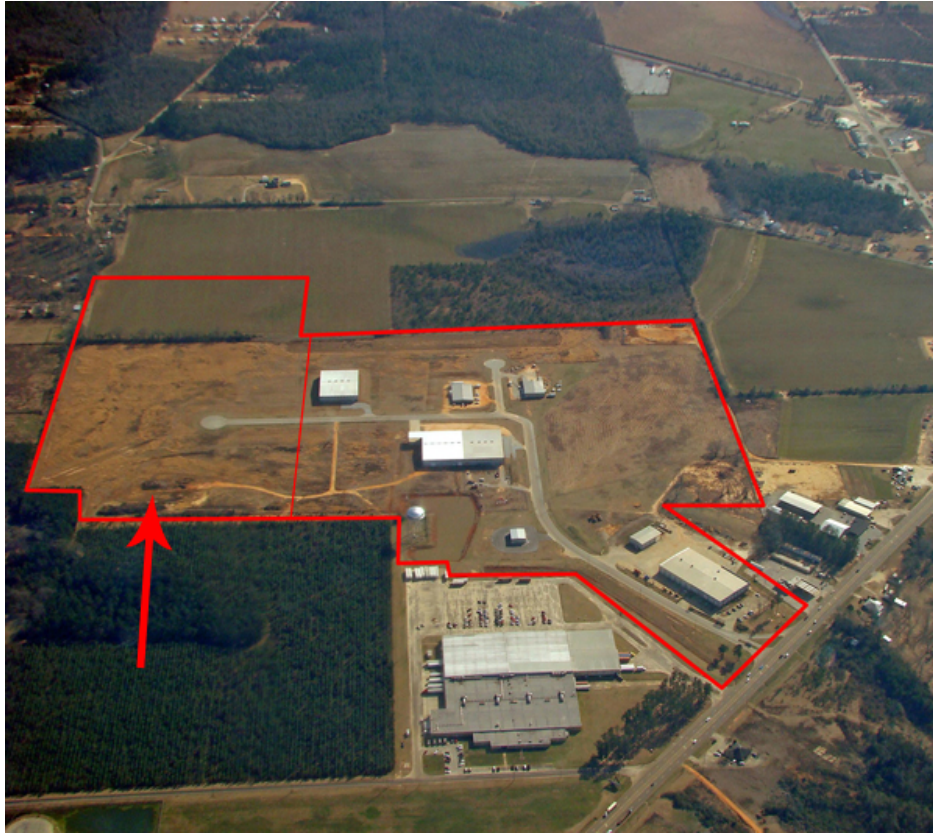


Alabama Site Selection Database

Monroeville IP East Site

City: Monroeville

County: Monroe



To meet the needs of industry, Alabama's economic development community is working to designate an inventory of industrial sites with sufficient site documentation for accurate, timely project evaluation. The AdvantageSite logo indicates that this property has met requirements for program designation. For more information on AdvantageSite and program requirements, visit our website.

This information has been secured from sources we believe to be reliable; however, we make no representation or warranties, expressed or implied, as to the accuracy of the information.

Economic Development Partnership of Alabama

www.edpa.org