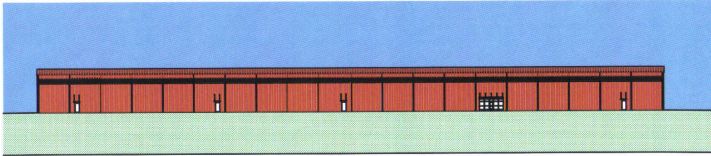


# Building Profile

## Alabama Site Selection Database

### Thomasville Spec Building

City: Thomasville    County: Clarke



WEST ELEVATION

<b>Building Id: 5425</b>	
<b>Street Address</b>	South Industrial Road
<b>Nearest City</b>	Thomasville
<b>Within City Limits</b>	Yes
<b>Zip Code</b>	36784
<b>Latitude</b>	
<b>Longitude</b>	
<b>Located in Industrial Park</b>	Yes
<b>Park Name</b>	Thomasville South Industrial Park
<b>Within Enterprise Zone</b>	Yes
<b>Within Favored Geographic Area</b>	
<b>Within Renewal Community</b>	

General Building Data	
<b>Total Size</b>	50,000 sq.ft.
<b>Space Available</b>	50,000 sq.ft.
<b>Multi-tenant</b>	
<b>Building Dimensions</b>	100' x 500'
<b>Number of Buildings</b>	1
<b>Number of Floors</b>	1
<b>Largest Production Area</b>	49,000 sq.ft.
<b>Office Area</b>	1,000 sq.ft.
<b>Building Expandable</b>	Yes
<b>Expandable to</b>	200,000 sq.ft.
<b>Floor Thickness</b>	
<b>Total Acreage</b>	10
<b>Additional Available</b>	Yes
<b>Ceiling Height</b>	Eave: 30 ft. Max: 30 ft.
<b>Bay Spacing</b>	Length: Width:
<b>Air Conditioned</b>	No
<b>Heated</b>	No
<b>Cranes</b>	Number of Cranes: Capacity of Largest: Under Hook:
<b>Truck Docks</b>	Number: 1 Dock Level: Yes Drive In: No
<b>Year Built</b>	2008
<b>Last Expansion</b>	
<b>Refrigerated Area</b>	No
<b>USDA Approved</b>	No
<b>Sprinklers</b>	
<b>Fire Rating</b>	4
<b>Construction Material</b>	Primary: Metal Secondary:
<b>Parking Paved</b>	No
<b>Number of Cars</b>	30
<b>Zoning</b>	Light Industrial
<b>Previous Use</b>	
<b>Previous Use Description</b>	under construction

Transportation	
<b>Rail Service</b>	Provider: Norfolk Southern Track Status: Adjacent Track Provider #2: Track Status: Not Specified
<b>Waterway</b>	Tennessee-Tombigbee Waterway Dock Facility: Port 26 to 50 miles Mobile, AL
<b>Nearest Commercial Air City</b>	Miles to Nearest Service: 100 mile(s)

Highways			
Highway Type	Highway Name	Miles to Access	Four Lane
Interstate	I-10	95	
Interstate	I-59	70	
Interstate	I-65	68	
Federal Highway	43	0	Yes
Federal Highway	80	43	No
Federal Highway	84	15	No

# Building Profile

## Alabama Site Selection Database

### Thomasville Spec Building

City: Thomasville

County: Clarke

#### Utilities

##### Natural Gas

Provider: Clarke-Mobile Gas District  
Status: Not Specified  
Size of Main: 8 in.  
Main PSI:

##### Electricity

Provider(s): Alabama Power Company  
Status: Not Specified  
Amps:  
Phase:  
Voltage:

##### Water

Provider: City of Thomasville  
Status: Not Specified  
Size of Main: 12 in.

##### Telecommunications

Service Provider: AT&T  
Fiber Optics: Yes  
Redundancy: Yes  
xDSL Available: Yes

##### Sewer

Provider: City of Thomasville  
Status: Not Specified  
Size of Main: 8 in.

#### Price

##### Base Rent (Annual)

##### Base Rent

##### Sale Price

\$1,500,000.00

##### Negotiable

##### Date Quoted

Nov 5, 2007

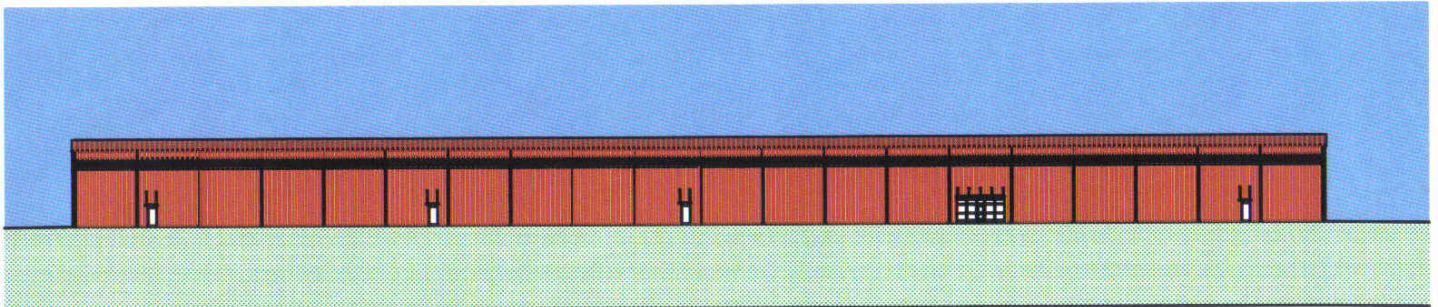
##### Price Comments

\$1.5 - \$1.75 million estimate. Land: \$10,000 per acre, not included in price. Contact Debra Fox  
Email:thomasvilledp1@mchsi.com, 334-636-5675.

#### General Comments

Under Construction. Completion March 2008. Excellent publicly owned property adjacent to Norfolk Southern Rail with easy access to US Highway 43. Greatly reduced price for projects guaranteeing significant permanent new jobs.

*Building information is current as of 11/5/07*



WEST ELEVATION

# Building Profile

## Alabama Site Selection Database

### Thomasville Spec Building

City: Thomasville

County: Clarke

