

Site Profile

Alabama Site Selection Database

Clayco, Inc.

City: Grove Hill County: Clarke



Site Id: 4715

Street Address: Forest Lane and Portis Street

Nearest City	Grove Hill
Within City Limits	Yes
Zip Code	36451
Latitude	31.6971
Longitude	-87.7643
Located in Industrial Park	No
Park Name	
Within Enterprise Zone	Yes
Within Favored Geographic Area	Yes
Within Renewal Community	

Transportation

Rail Service

Provider:
Track Status: Not Specified
Provider #2:
Track Status:

Navigable Waterway: Tennessee-Tombigbee Waterway

Dock Facility: Port > 50 miles

Nearest Commercial Air City: Mobile, AL
Miles to Nearest Service: 85

Highways

Highway Type	Highway Name	Miles to Access	Four Lane
Interstate	I-59	87.0	
Interstate	I-65	55.0	
Federal Highway	43	5.0	Yes
Federal Highway	84	0.0	No

Price

Sale Price: \$270,000.00
Total

Land Lease Rate (Annual)

Negotiable? Yes
Date Quoted: Jan 18, 2012

Price Comments

General Site Data

Total Acres	17
Available Acres	17
Additional Available	No
Largest Tract	
Smallest Tract	
Protective Covenants	
Phase 1 Environmental	Yes
Preliminary Geotechnical:	
Topography	Rolling
Preliminary Wetlands Assessment:	
Ecological Review:	
Cultural Resources Review:	
Zoning	Light Industrial
Previous Use	Forest
Previous Use Description	Timber Yard

Utilities

Natural Gas

Provider: Clarke-Mobile Gas District
Status: Not Specified
Size of Main:
Main PSI:

Water

Provider: Grove Hill Utilities
Status: Existing Connection
Size of Main: 8 in.

Sewer

Provider: Grove Hill Utilities
Status: Existing Connection
Size of Main: 8 in.

Electricity

Provider #1: Alabama Power Company
Status: Not Specified
Service to Property (Distribution):
Transmission:
Provider #2:

Telecommunications

Provider: TDS Communications
Fiber Optics:
Redundancy:
xDSL Available: Yes

Site Profile

Alabama Site Selection Database

Clayco, Inc.

City: Grove Hill

County: Clarke

General Comments

Site information is current as of 1/18/12

Site Profile

Alabama Site Selection Database

Clayco, Inc.

City: Grove Hill

County: Clarke



This information has been secured from sources we believe to be reliable; however, we make no representation or warranties, expressed or implied, as to the accuracy of the information.

Economic Development Partnership of Alabama
www.edpa.org

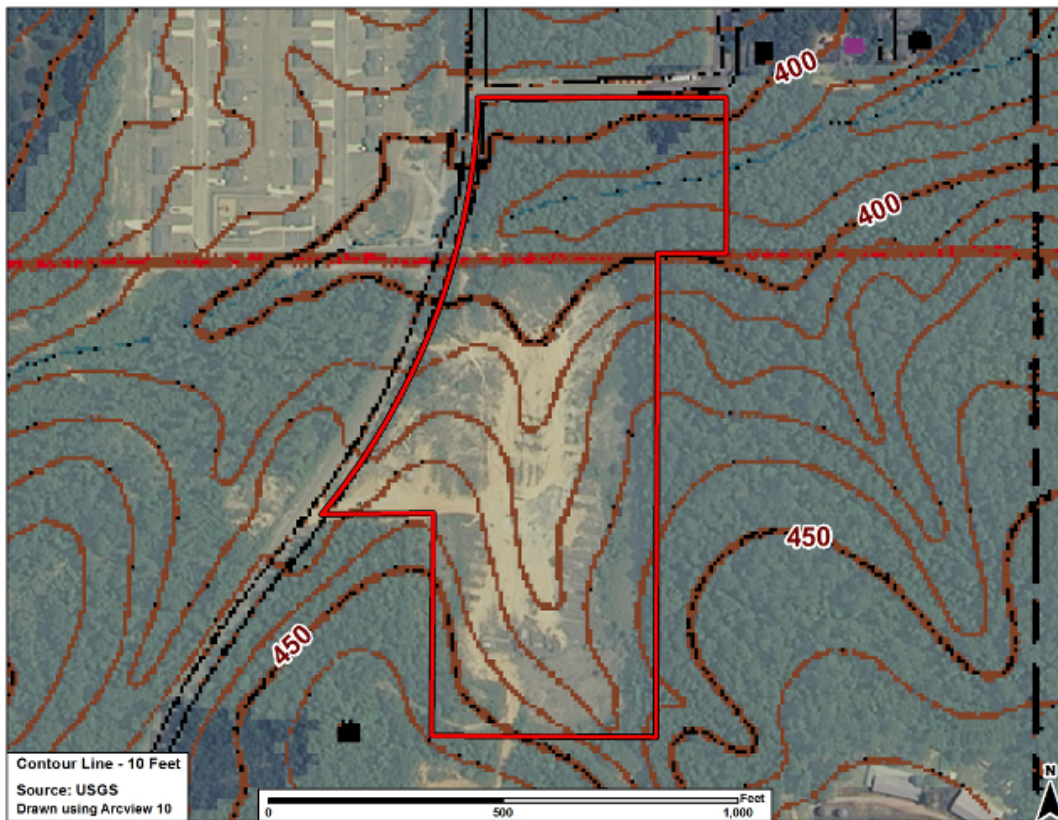
Site Profile

Alabama Site Selection Database

Clayco, Inc.

City: Grove Hill

County: Clarke



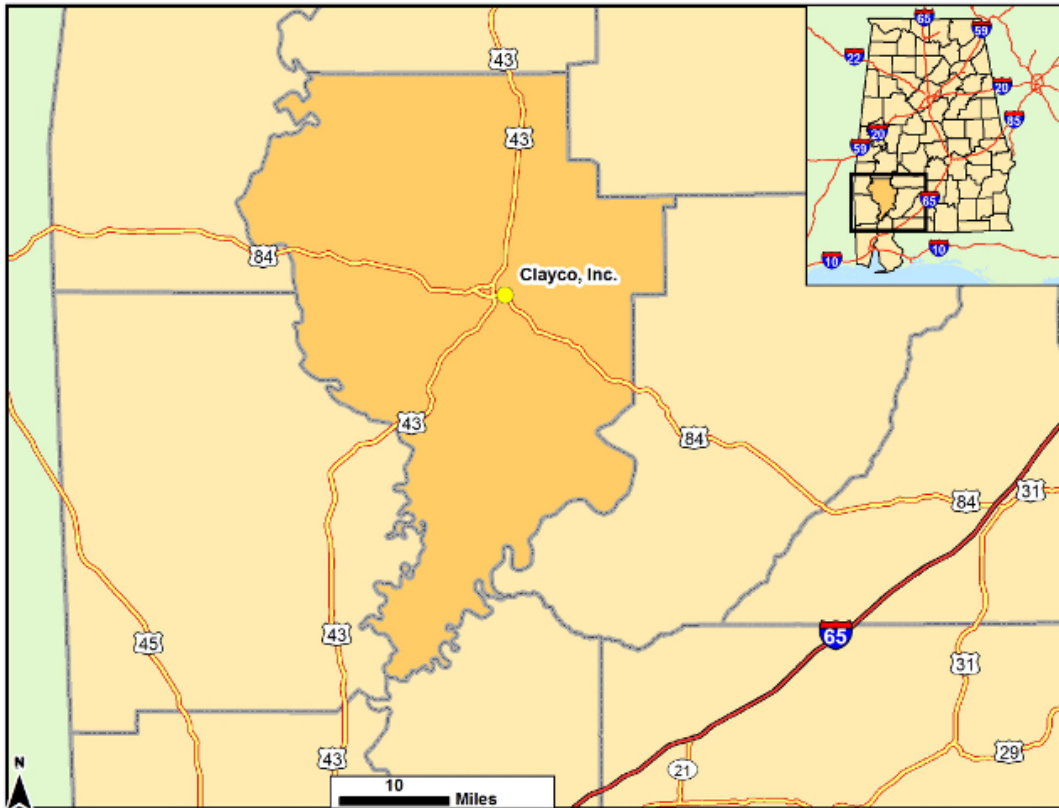
Site Profile

Alabama Site Selection Database

Clayco, Inc.

City: Grove Hill

County: Clarke



This information has been secured from sources we believe to be reliable; however, we make no representation or warranties, expressed or implied, as to the accuracy of the information.

Economic Development Partnership of Alabama
www.edpa.org