

# Site Profile

## Alabama Site Selection Database

### Grove Hill Industrial Site

City: Grove Hill    County: Clarke



General Site Data	
Total Acres	120
Available Acres	120
Additional Available	Yes
Largest Tract	
Smallest Tract	
Protective Covenants	No
Phase 1 Environmental	No
Preliminary Geotechnical:	No
Topography	Flat
Preliminary Wetlands Assessment:	No
Ecological Review:	No
Cultural Resources Review:	No
Zoning	None
Previous Use	Forest
Previous Use Description	Pasture

<b>Site Id: 1482</b>	
Street Address	Hwy 84 East
Nearest City	Grove Hill
Within City Limits	Yes
Zip Code	36451
Latitude	31.6852
Longitude	-87.7569
Located in Industrial Park	No
Park Name	
Within Enterprise Zone	Yes
Within Favored Geographic Area	Yes
Within Renewal Community	No

Transportation	
<b>Rail Service</b>	
Provider:	
Track Status:	Not Available
Provider #2:	
Track Status:	
<b>Navigable Waterway</b>	Tennessee-Tombigbee Waterway
Dock Facility:	Port > 50 miles
<b>Nearest Commercial Air City</b>	Mobile, AL
Miles to Nearest Service:	85

Highways			
Highway Type	Highway Name	Miles to Access	Four Lane
Interstate	I-10	84.0	
Interstate	I-59	89.0	
Interstate	I-65	70.0	
Federal Highway	43	1.0	Yes
Federal Highway	84	0.0	Yes

Price	
<b>Sale Price</b>	\$6,000.00 per acre

<b>Land Lease Rate (Annual)</b>	
<b>Negotiable?</b>	Yes
<b>Date Quoted</b>	Aug 1, 2008
<b>Price Comments</b>	Price negotiable based on number of jobs created.

Utilities	
<b>Natural Gas</b>	
Provider:	Clarke-Mobile Gas District
Status:	Existing Connection
Size of Main:	6 in.
Main PSI:	
<b>Water</b>	
Provider:	Grove Hill Utilities
Status:	Existing Connection
Size of Main:	6 in.
<b>Sewer</b>	
Provider:	Grove Hill Utilities
Status:	Existing Connection
Size of Main:	8 in.
<b>Electricity</b>	
Provider #1:	Alabama Power Company
Status:	Existing Connection
Service to Property	Yes
(Distribution):	
Transmission:	Yes
Provider #2:	
<b>Telecommunications</b>	
Provider:	TDS Communications
Fiber Optics:	Yes
Redundancy:	Yes
xDSL Available:	

# Site Profile

## Alabama Site Selection Database

### Grove Hill Industrial Site

City: Grove Hill    County: Clarke

#### General Comments

Available property is adjacent to the Grove Hill Municipal Airport with a 2,700-foot runway, tie-downs and radio-controlled lighting.

*Site information is current as of 8/1/08*



This information has been secured from sources we believe to be reliable; however, we make no representation or warranties, expressed or implied, as to the accuracy of the information.

Economic Development Partnership of Alabama  
[www.advantagealabama.com](http://www.advantagealabama.com)

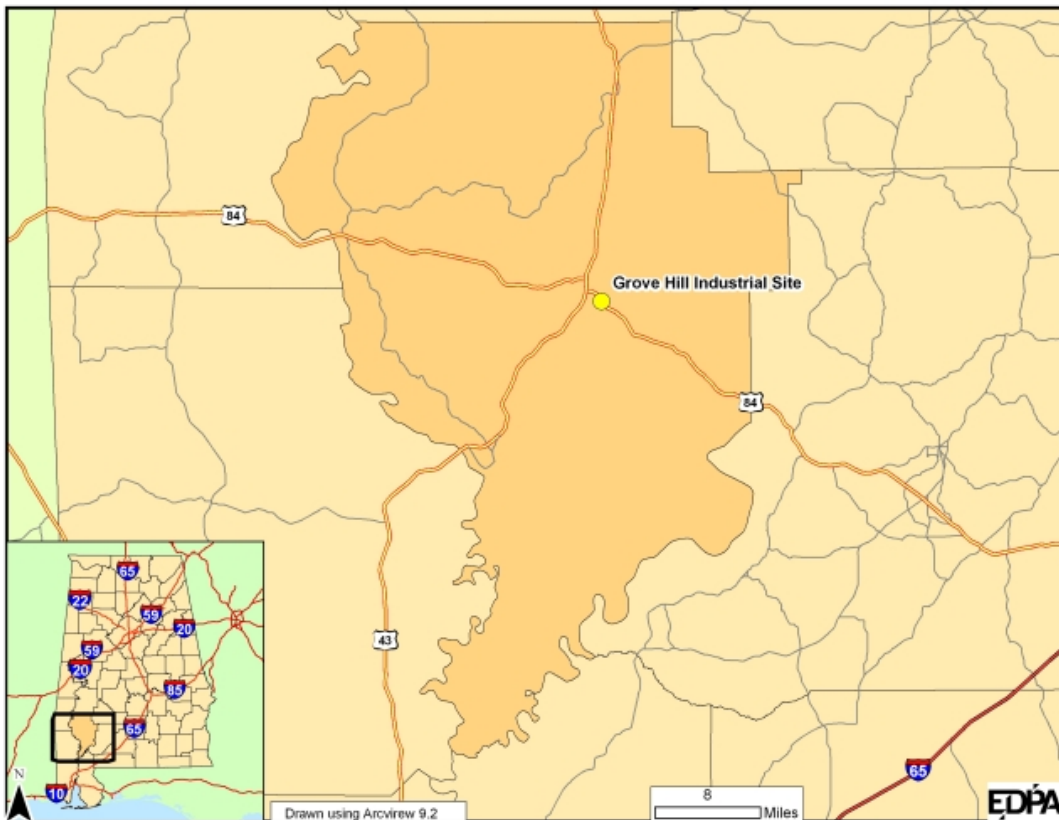
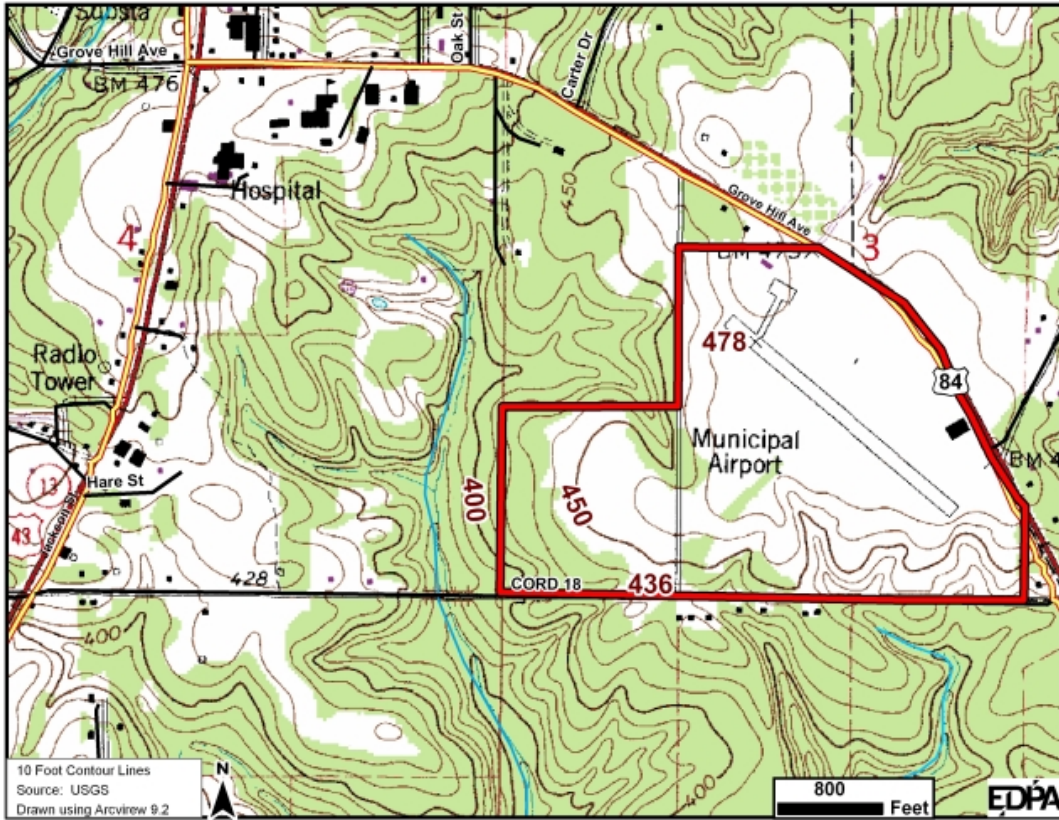
# Site Profile

## Alabama Site Selection Database

### Grove Hill Industrial Site

City: Grove Hill

County: Clarke



This information has been secured from sources we believe to be reliable; however, we make no representation or warranties, expressed or implied, as to the accuracy of the information.

Economic Development Partnership of Alabama  
www.advantagealabama.com