

# Site Profile

## Alabama Site Selection Database

### Jackson Industrial Park

City: Jackson    County: Clarke



**Site Id:** 100  
**Street Address:** Clolinger Road

**Nearest City:** Jackson  
**Within City Limits:** Yes  
**Zip Code:** 36545  
**Latitude:** 31.5135  
**Longitude:** -87.8633  
**Located in Industrial Park:** Yes  
**Park Name:** Jackson Industrial Park  
**Within Enterprise Zone:** Yes  
**Within Favored Geographic Area:**  
**Within Renewal Community:**

#### Transportation

**Rail Service**  
 Provider: Norfolk Southern  
 Track Status: Adjacent Track  
 Provider #2:  
 Track Status:  
**Navigable Waterway:** Tennessee-Tombigbee Waterway  
 Dock Facility: Port 1 to 5 miles  
**Nearest Commercial Air City:** Mobile, AL  
 Miles to Nearest Service: 70

#### Highways

Highway Type	Highway Name	Miles to Access	Four Lane
Interstate	I-10	70.0	
Interstate	I-65	52.0	
Federal Highway	43	2.0	Yes
Alabama Highway	177	1.0	No
Alabama Highway	69	3.0	No

**Price**  
**Sale Price:** \$5,000.00 per acre

#### Land Lease Rate (Annual)

**Negotiable?** Yes  
**Date Quoted:** Jul 12, 2011

#### Price Comments

#### General Site Data

**Total Acres:** 150  
**Available Acres:** 25  
**Additional Available:** Yes  
**Largest Tract:** 25  
**Smallest Tract:** 2  
**Protective Covenants:** Yes  
**Phase 1 Environmental:** Yes  
**Preliminary Geotechnical:**  
**Topography:** Slight Rolling  
**Preliminary Wetlands Assessment:**  
**Ecological Review:**  
**Cultural Resources Review:**  
**Zoning:** Light Industrial  
**Previous Use:** Forest  
**Previous Use Description:** Forest

#### Utilities

**Natural Gas**  
 Provider: Clarke-Mobile Gas District  
 Status: Existing Connection  
 Size of Main: 8 in.  
 Main PSI:  
**Water**  
 Provider: Jackson Water Works  
 Status: Existing Connection  
 Size of Main: 8 in.  
**Sewer**  
 Provider: Jackson Water Works  
 Status: Existing Connection  
 Size of Main:  
**Electricity**  
 Provider #1: Alabama Power Company  
 Status: Existing Connection  
 Service to Property (Distribution): Yes  
 Transmission: Yes  
 Provider #2:  
**Telecommunications**  
 Provider: AT&T  
 Fiber Optics: Yes  
 Redundancy: Yes  
 xDSL Available:

# Site Profile

## Alabama Site Selection Database

### Jackson Industrial Park

City: Jackson County: Clarke

#### General Comments

Publicly owned property with new 25-acre tract on Clolinger Road now open - level to gently sloping with elevations from 30 feet to 70 feet MSL. Park backs up to Bassett Creek and much of the land is leased.

*Site information is current as of 7/12/11*

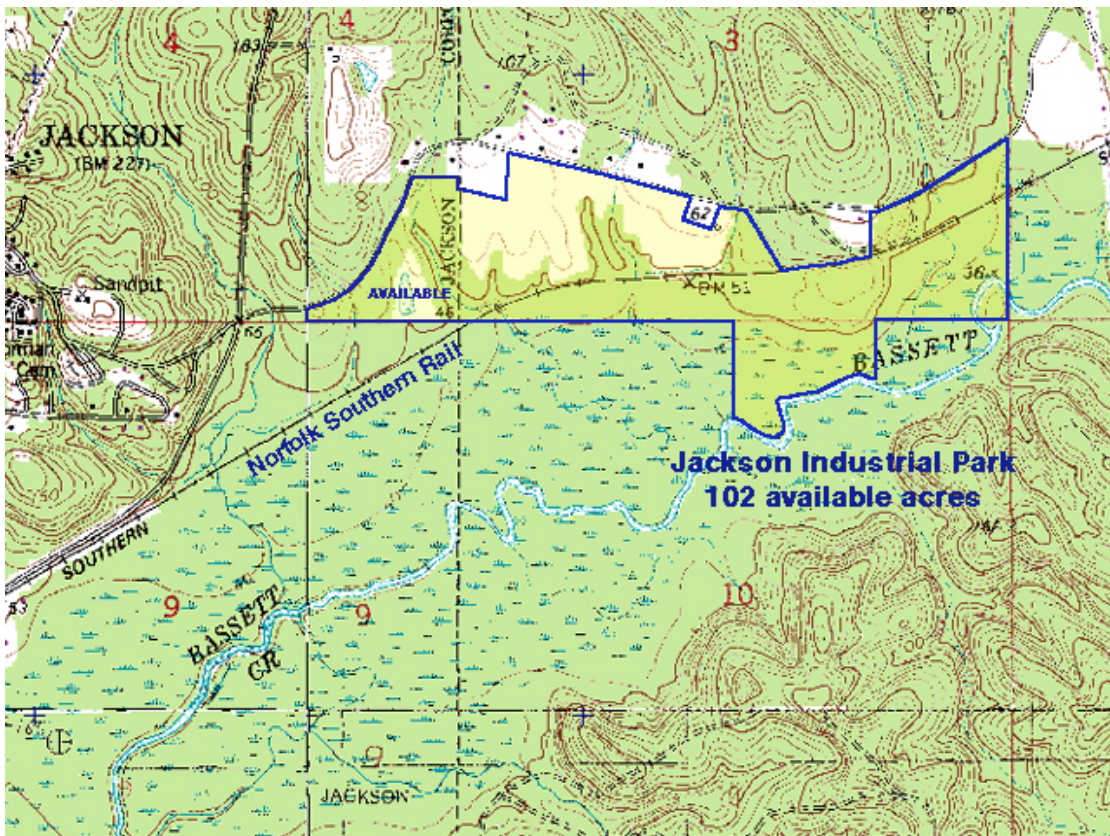
# Site Profile

## Alabama Site Selection Database

### Jackson Industrial Park

City: Jackson

County: Clarke



This information has been secured from sources we believe to be reliable; however, we make no representation or warranties, expressed or implied, as to the accuracy of the information.

Economic Development Partnership of Alabama  
www.edpa.org

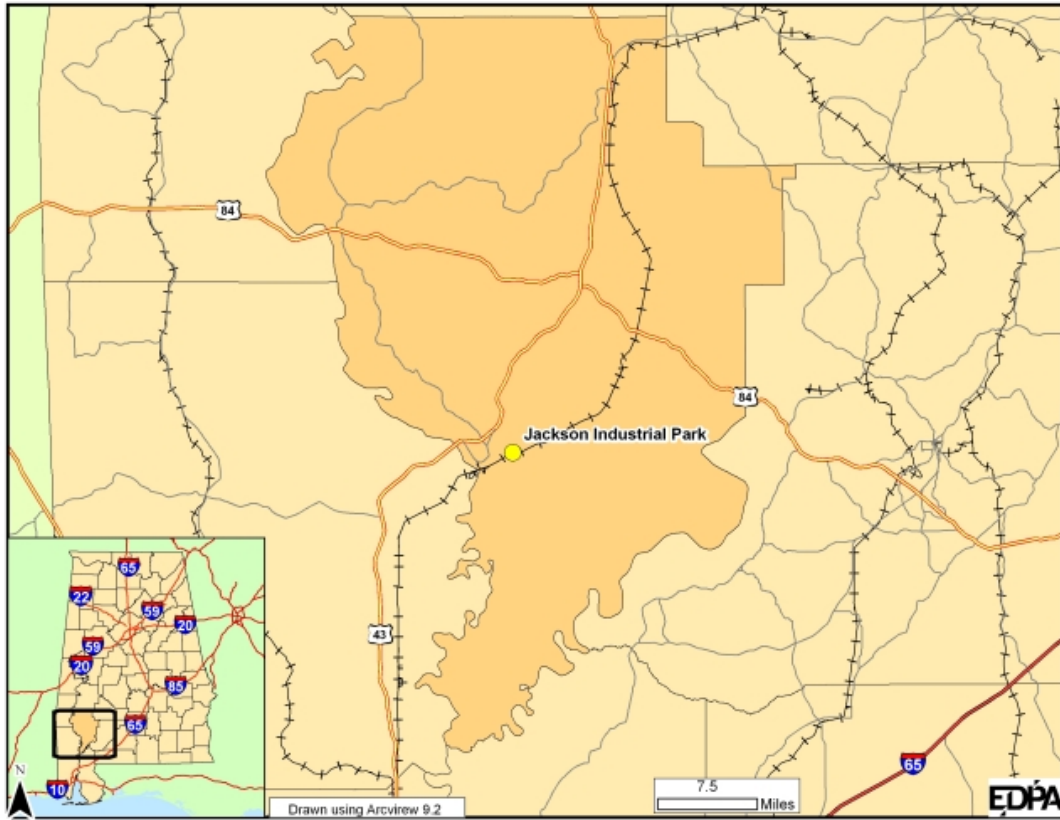
# Site Profile

## Alabama Site Selection Database

### Jackson Industrial Park

City: Jackson

County: Clarke



This information has been secured from sources we believe to be reliable; however, we make no representation or warranties, expressed or implied, as to the accuracy of the information.

Economic Development Partnership of Alabama  
www.edpa.org