

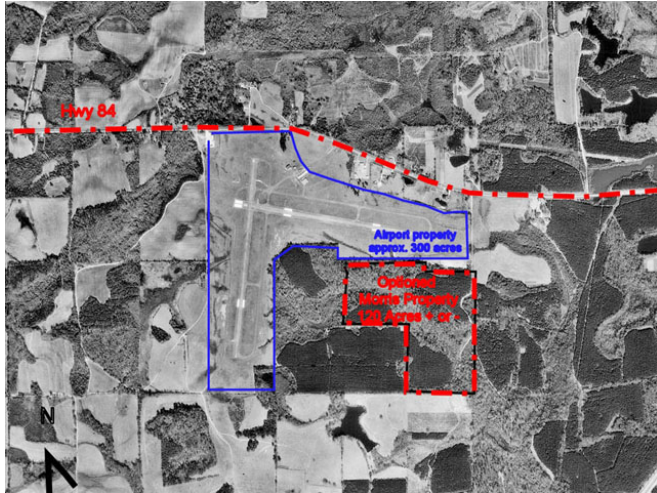
Site Profile

Alabama Site Selection Database

Evergreen Airport/Stowers Prop

City: Evergreen

County: Conecuh



General Site Data

Total Acres	120
Available Acres	120
Additional Available	Yes
Largest Tract	120
Smallest Tract	120
Protective Covenants	
Phase 1 Environmental	Yes
Preliminary Geotechnical:	
Topography	Flat
Preliminary Wetlands	Yes
Assessment:	
Ecological Review:	
Cultural Resources Review:	
Zoning	Heavy Industrial
Previous Use	Agriculture
Previous Use Description	agriculture

Utilities

Natural Gas

Provider: South Alabama Gas
 Status: < 500ft
 Size of Main: 4 in.
 Main PSI: 360

Water

Provider: Evergreen Utilities
 Status: < 1 mile
 Size of Main: 10 in.

Sewer

Provider: Evergreen Utilities
 Status: < 1 mile
 Size of Main: 6 in.

Electricity

Provider #1: Southern Pine Electric Co-op
 Status: < 500ft
 Service to Property
 (Distribution):
 Transmission:
 Provider #2: Southern Pine Electric Co-op

Telecommunications

Provider: AT&T
 Fiber Optics:
 Redundancy:
 xDSL Available:

Site Id: 4434

Street Address Highway 84

Nearest City Evergreen

Within City Limits No

Zip Code 36401

Latitude 31.4177

Longitude -87.0464

Located in Industrial Park No

Park Name N/A

Within Enterprise Zone No

Within Favored Geographic Area Yes

Within Renewal Community Yes

Transportation

Rail Service

Provider: CSX Transportation
 Track Status: < 1 mile
 Provider #2:
 Track Status:

Navigable Waterway Alabama River

Dock Facility: Port 26 to 50 miles

Nearest Commercial Air City Montgomery, AL

Miles to Nearest Service: 40

Highways

Highway Type	Highway Name	Miles to Access	Four Lane
Interstate	I-10	78.0	
Interstate	I-65	1.0	
Interstate	I-85	75.0	
Federal Highway	31	1.0	No
Federal Highway	84	0.0	No

Price

Sale Price \$13,000.00 per acre

Land Lease Rate (Annual)

Negotiable?

Date Quoted Jan 28, 2010

Price Comments

This information has been secured from sources we believe to be reliable; however, we make no representation or warranties, expressed or implied, as to the accuracy of the information.

Economic Development Partnership of Alabama
www.advantagealabama.com

Site Profile

Alabama Site Selection Database

Evergreen Airport/Stowers Prop

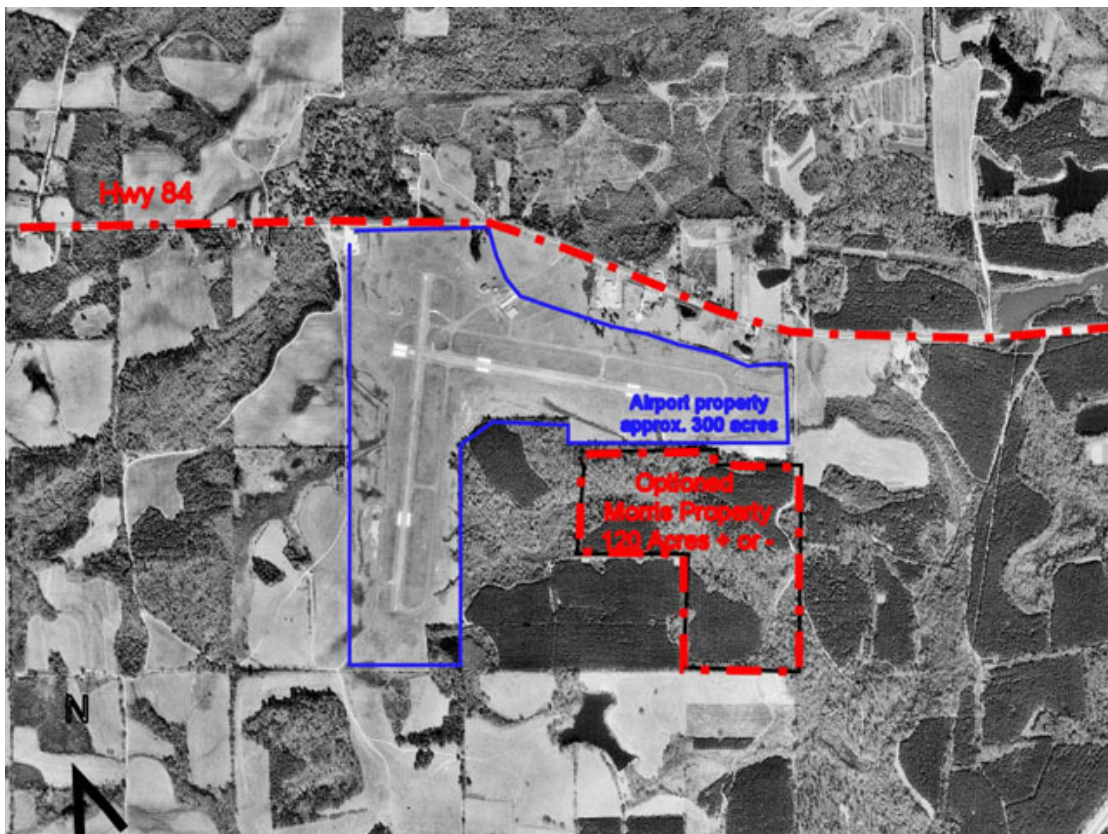
City: Evergreen

County: Conecuh

General Comments

Evergreen Airport is city owned and leased to the US Navy as a training facility. There are 2 trucking companies on site: AAA Cooper and Roadway. Two runways with each a length of 5,000 ft.

Site information is current as of 1/28/10



This information has been secured from sources we believe to be reliable; however, we make no representation or warranties, expressed or implied, as to the accuracy of the information.

Economic Development Partnership of Alabama
www.advantagealabama.com

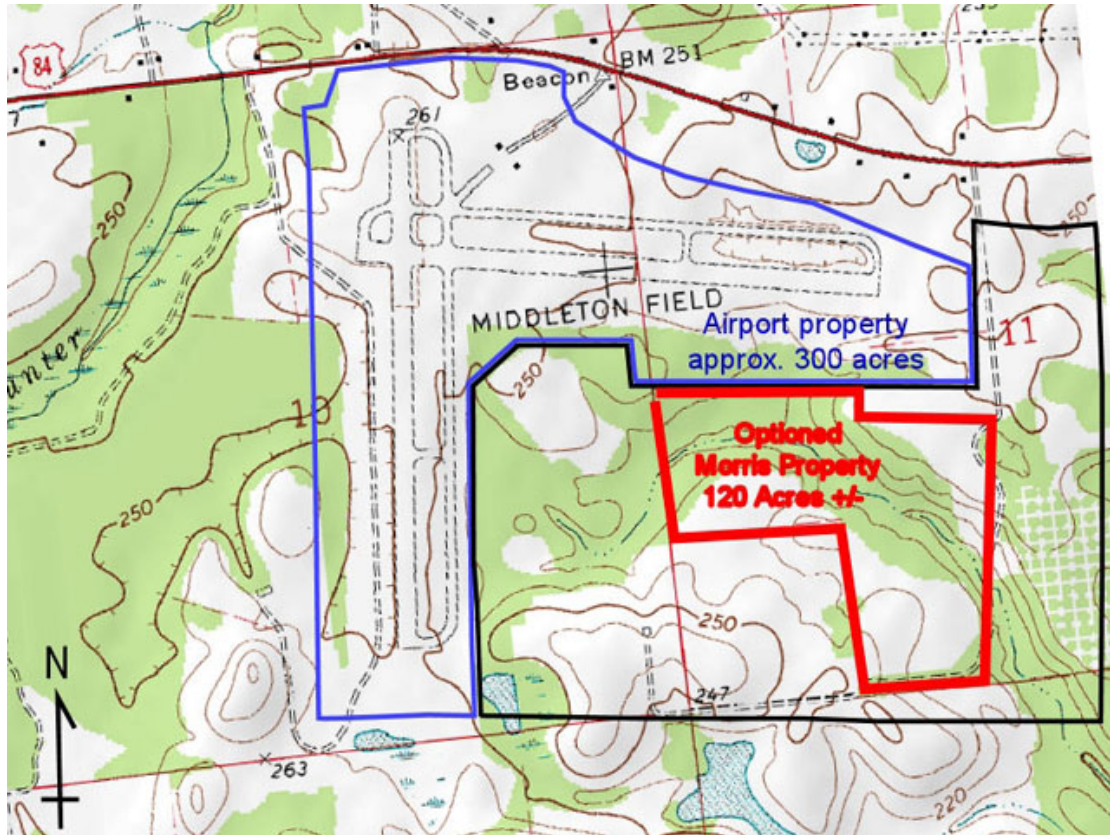
Site Profile

Alabama Site Selection Database

Evergreen Airport/Stowers Prop

City: Evergreen

County: Conecuh



This information has been secured from sources we believe to be reliable; however, we make no representation or warranties, expressed or implied, as to the accuracy of the information.

Economic Development Partnership of Alabama
www.advantagealabama.com

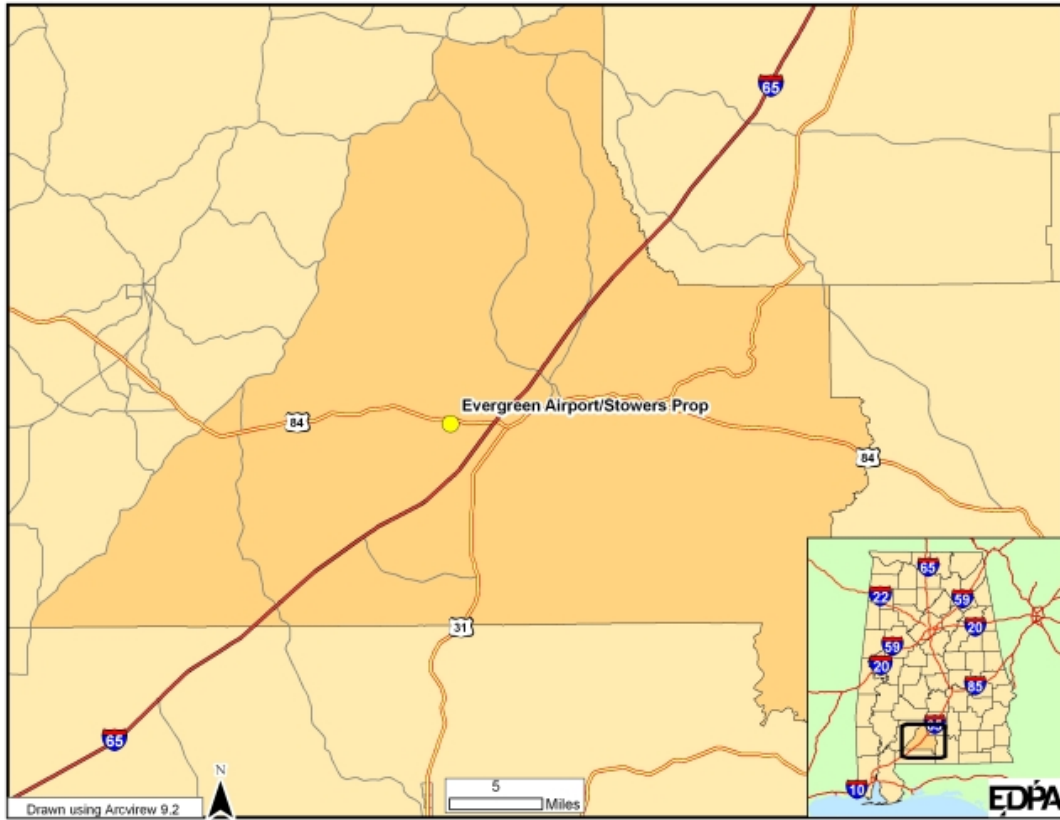
Site Profile

Alabama Site Selection Database

Evergreen Airport/Stowers Prop

City: Evergreen

County: Conecuh



This information has been secured from sources we believe to be reliable; however, we make no representation or warranties, expressed or implied, as to the accuracy of the information.

Economic Development Partnership of Alabama
www.advantagealabama.com