

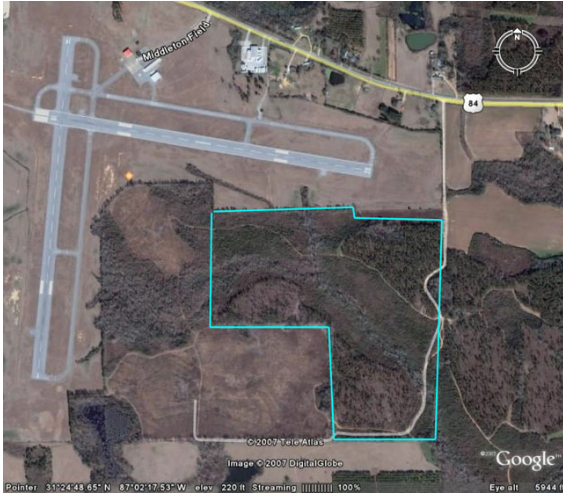
Site Profile

Alabama Site Selection Database

Stowers Timberland - 120 Acres

City: Evergreen

County: Conecuh



General Site Data

Total Acres	120
Available Acres	120
Additional Available	Yes
Largest Tract	120
Smallest Tract	120
Fire Rating	6
Protective Covenants	
Phase 1 Environmental	
Soils Data Available	
Topography	Flat
Zoning	None
Previous Use	Agriculture
Previous Use Description	agriculture

Utilities

Natural Gas

Provider: South Alabama Gas
 Status: < 1 mile
 Size of Main: 4 in.
 Main PSI: 360

Water

Provider: Evergreen Utilities
 Status: Not Specified
 Size of Main:

Sewer

Provider: Evergreen Utilities
 Status: Not Specified
 Size of Main:

Electricity

Provider #1: Alabama Power Company
 Status: Not Specified
 Service to Property
 (Distribution):
 Transmission:
 Provider #2: Alabama Electric Co-op

Telecommunications

Provider: BellSouth
 Fiber Optics:
 Redundancy:
 xDSL Available:

Site Id: 4504

Street Address

Hwy 84
 Middleton Field

Nearest City

Evergreen

Within City Limits

No

Zip Code

36401

Latitude

Longitude

Located in Industrial Park

No

Park Name

Within Enterprise Zone

No

Within Favored Geographic Area

Yes

Within Renewal Community

Transportation

Rail Service

Provider:
 Track Status: Not Specified
 Provider #2:
 Track Status:

Navigable Waterway

Alabama River
 Dock Facility: Port 26 to 50 miles

Nearest Commercial Air City

Montgomery, AL

Miles to Nearest Service:

Highways

<u>Highway Type</u>	<u>Highway Name</u>	<u>Miles to Access</u>	<u>Four Lane</u>
Interstate	I-165	1.0	
Federal Highway	31	1.5	No
Federal Highway	84	0.0	No

Price

Sale Price

\$13,000.00
 per acre

Land Lease Rate (Annual)

Negotiable?

Date Quoted

Oct 1, 2007

Price Comments

General Comments

Site Profile

Alabama Site Selection Database

Stowers Timberland - 120 Acres

City: Evergreen

County: Conecuh

