

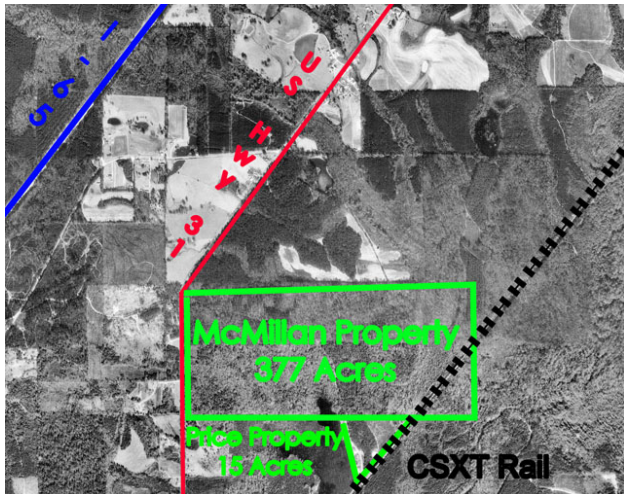
# Site Profile

## Alabama Site Selection Database

### McMillan Property

City: Castleberry

County: Conecuh



**Site Id:** 4428  
**Street Address:** US Highway 31 North

**Nearest City:** Castleberry  
**Within City Limits:** No  
**Zip Code:** 36401  
**Latitude:** 31.3773  
**Longitude:** -87.0262  
**Located in Industrial Park:** No  
**Park Name:** N/A  
**Within Enterprise Zone:** No  
**Within Favored Geographic Area:** Yes  
**Within Renewal Community:** Yes

#### Transportation

**Rail Service**  
 Provider: CSX Transportation  
 Track Status: Adjacent Track  
 Provider #2:  
 Track Status:

**Navigable Waterway:** Alabama River  
 Dock Facility: Port > 50 miles

**Nearest Commercial Air City:** Montgomery, AL  
 Miles to Nearest Service: 78

#### Highways

Highway Type	Highway Name	Miles to Access	Four Lane
Interstate	I-10	45.0	
Interstate	I-65	4.8	
Federal Highway	31	0.0	No
Federal Highway	84	4.0	No

**Price**  
**Sale Price:** \$5,500.00 per acre

#### Land Lease Rate (Annual)

**Negotiable?**  
**Date Quoted:** Jul 30, 2008  
**Price Comments:**

#### General Site Data

<b>Total Acres</b>	377
<b>Available Acres</b>	377
<b>Additional Available</b>	Yes
<b>Largest Tract</b>	377
<b>Smallest Tract</b>	250
<b>Protective Covenants</b>	
<b>Phase 1 Environmental</b>	Yes
<b>Preliminary Geotechnical:</b>	
<b>Topography</b>	Flat
<b>Preliminary Wetlands</b>	
<b>Assessment:</b>	
<b>Ecological Review:</b>	
<b>Cultural Resources Review:</b>	
<b>Zoning</b>	None
<b>Previous Use</b>	Forest
<b>Previous Use Description</b>	forest

#### Utilities

<b>Natural Gas</b>	Provider: South Alabama Gas Status: Existing Connection Size of Main: 4 in. Main PSI: 360
<b>Water</b>	Provider: Fairview Water System Status: Existing Connection Size of Main: 4 in.
<b>Sewer</b>	Provider: Evergreen Utilities Status: Unavailable Size of Main:
<b>Electricity</b>	Provider #1: Southern Pine Electric Co-op Status: < 500ft Service to Property (Distribution): Transmission: Provider #2:
<b>Telecommunications</b>	Provider: AT&T Fiber Optics: Redundancy: xDSL Available:

# Site Profile

## Alabama Site Selection Database

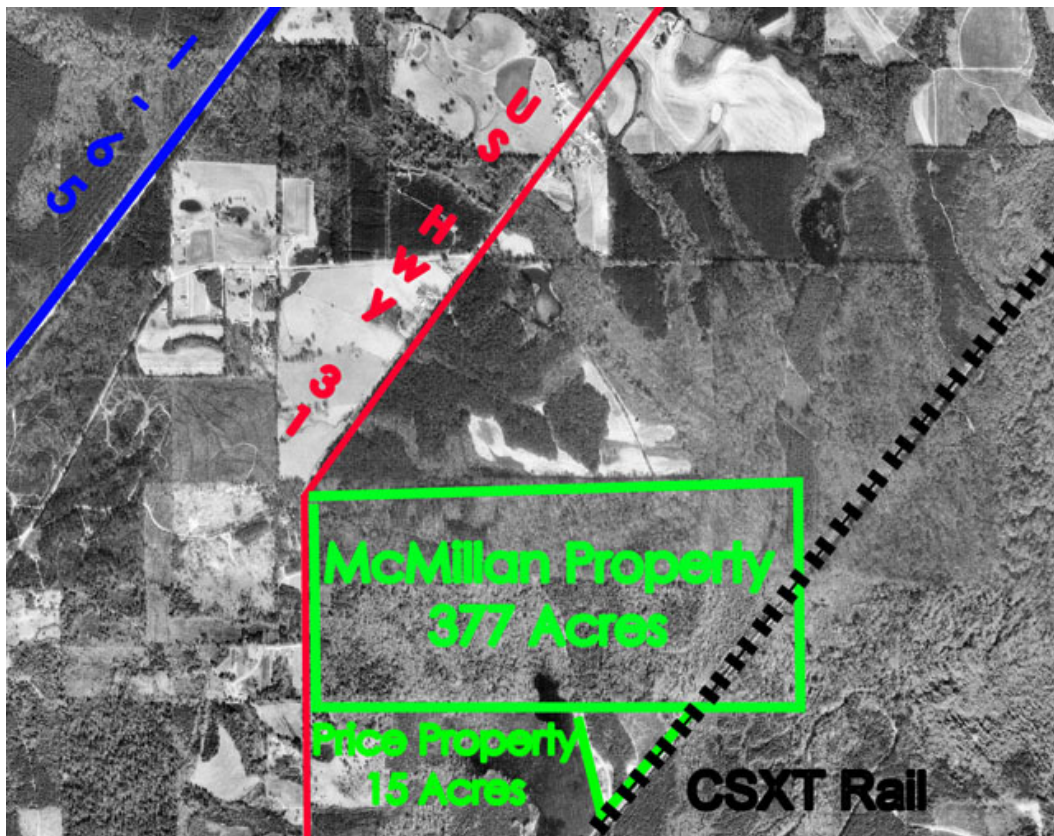
### McMillan Property

City: Castleberry

County: Conecuh

#### General Comments

*Site information is current as of 1/28/10*



This information has been secured from sources we believe to be reliable; however, we make no representation or warranties, expressed or implied, as to the accuracy of the information.

Economic Development Partnership of Alabama  
[www.advantagealabama.com](http://www.advantagealabama.com)

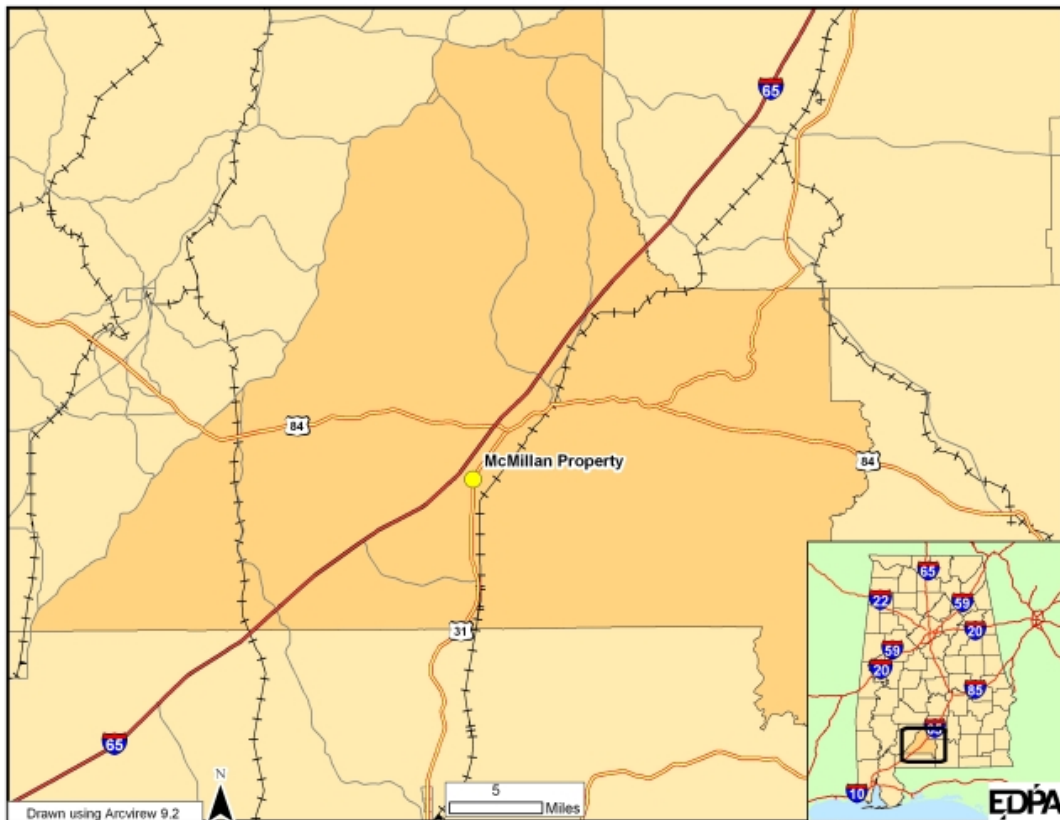
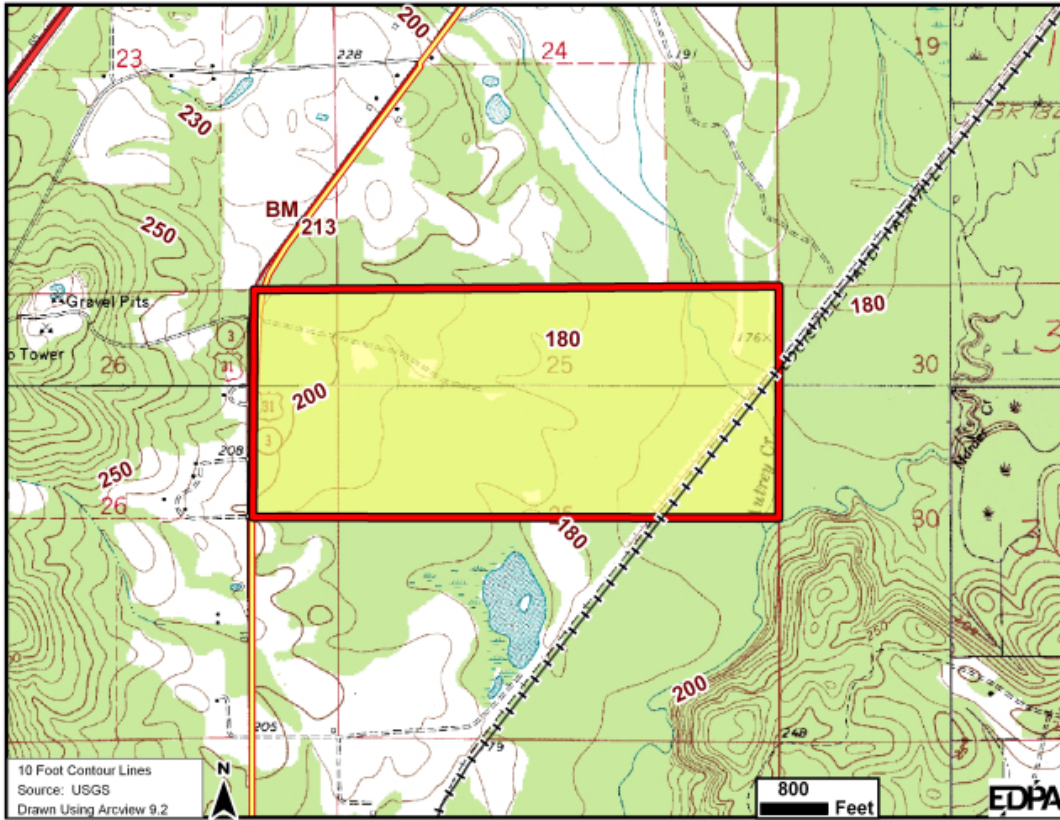
# Site Profile

## Alabama Site Selection Database

### McMillan Property

City: Castleberry

County: Conecuh



This information has been secured from sources we believe to be reliable; however, we make no representation or warranties, expressed or implied, as to the accuracy of the information.

Economic Development Partnership of Alabama  
[www.advantagealabama.com](http://www.advantagealabama.com)