

Site Profile

Alabama Site Selection Database

Rivercane Industrial Sites

City: Atmore County: Escambia



General Site Data	
Total Acres	235
Available Acres	235
Additional Available	
Largest Tract	
Smallest Tract	
Protective Covenants	Yes
Phase 1 Environmental	Yes
Preliminary Geotechnical:	
Topography	Flat
Preliminary Wetlands	Yes
Assessment:	
Ecological Review:	
Cultural Resources Review:	Yes
Zoning	Light Industrial
Previous Use	
Previous Use Description	Available Property

Site Id: 4350	
Street Address	I-65 & Hwy 21
Nearest City	Atmore
Within City Limits	Yes
Zip Code	36502
Latitude	31.1115
Longitude	-87.4735
Located in Industrial Park	Yes
Park Name	Rivercane #3
Within Enterprise Zone	No
Within Favored Geographic Area	Yes
Within Renewal Community	

Transportation	
Rail Service	
Provider:	
Track Status:	Not Specified
Provider #2:	
Track Status:	
Navigable Waterway	
Dock Facility:	Not Specified
Nearest Commercial Air City	
Miles to Nearest Service:	55
	Mobile, AL

Highways			
Highway Type	Highway Name	Miles to Access	Four Lane
Interstate	I-65	0.0	
Federal Highway	31	6.0	No
Alabama Highway	21	0.0	Yes

Price	
Sale Price	\$25,000.00 per acre
Land Lease Rate (Annual)	
Negotiable?	Yes
Date Quoted	Jun 20, 2011
Price Comments	
Price is for light industrial property only.	

Utilities	
Natural Gas	
Provider:	City of Atmore
Status:	Existing Connection
Size of Main:	6 in.
Main PSI:	
Water	
Provider:	City of Atmore
Status:	Existing Connection
Size of Main:	12 in.
Sewer	
Provider:	City of Atmore
Status:	Existing Connection
Size of Main:	12 in.
Electricity	
Provider #1:	Alabama Power Company
Status:	Existing Connection
Service to Property (Distribution):	
Transmission:	
Provider #2:	Southern Pine Electric Co-op
Telecommunications	
Provider:	Frontier Communications
Fiber Optics:	Yes
Redundancy:	
xDSL Available:	Yes

Site Profile

Alabama Site Selection Database

Rivercane Industrial Sites

City: Atmore

County: Escambia

General Comments

Site information is current as of 6/20/11

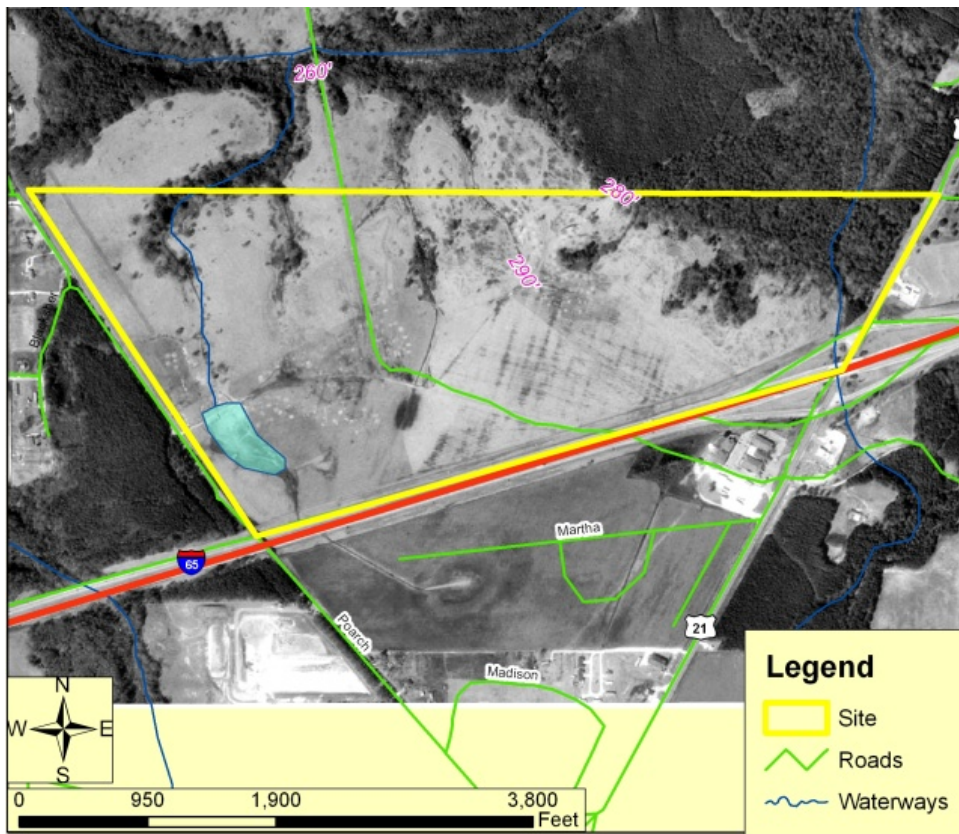
Site Profile

Alabama Site Selection Database

Rivercane Industrial Sites

City: Atmore County: Escambia

I-65 at Highway 21
Atmore, Alabama



This information has been secured from sources we believe to be reliable; however, we make no representation or warranties, expressed or implied, as to the accuracy of the information.

Economic Development Partnership of Alabama
www.edpa.org

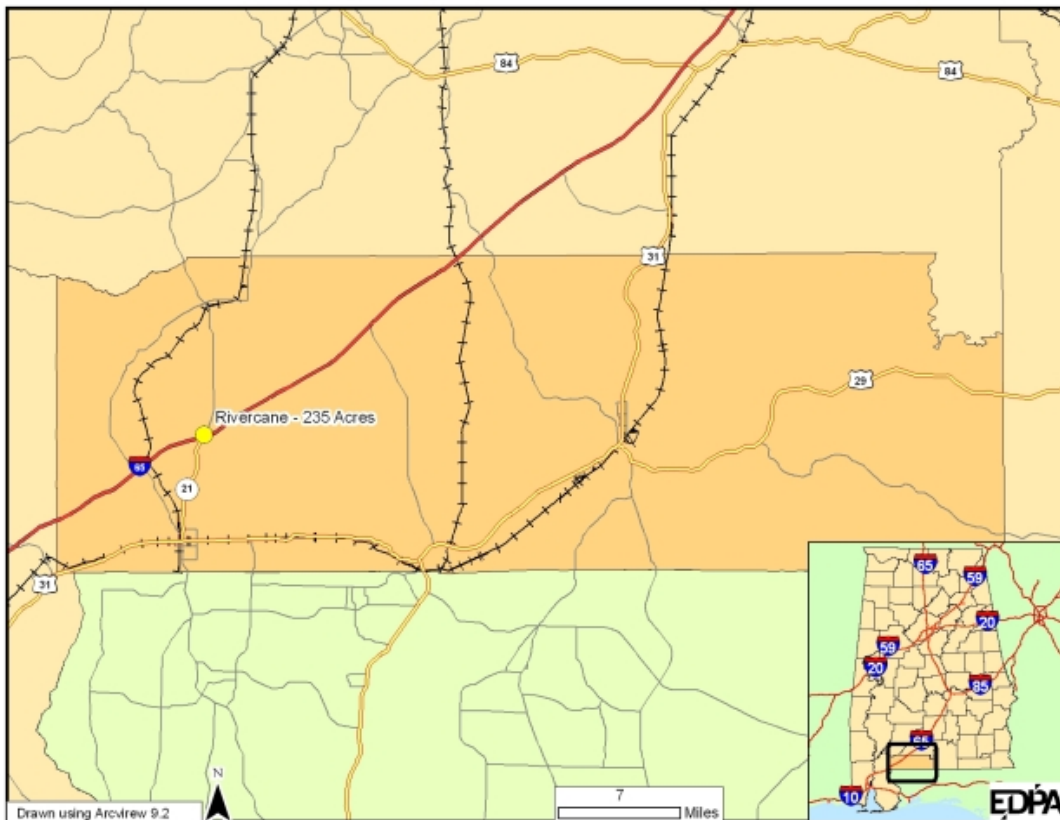
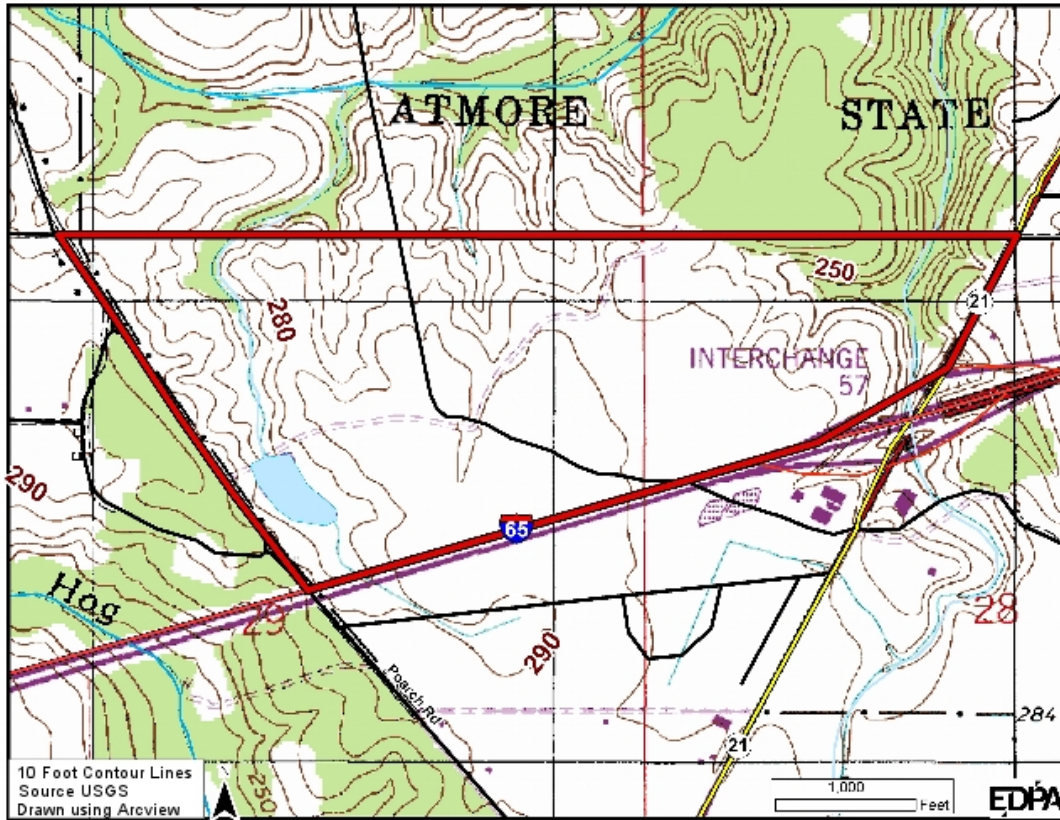
Site Profile

Alabama Site Selection Database

Rivercane Industrial Sites

City: Atmore

County: Escambia



This information has been secured from sources we believe to be reliable; however, we make no representation or warranties, expressed or implied, as to the accuracy of the information.

Economic Development Partnership of Alabama
www.edpa.org