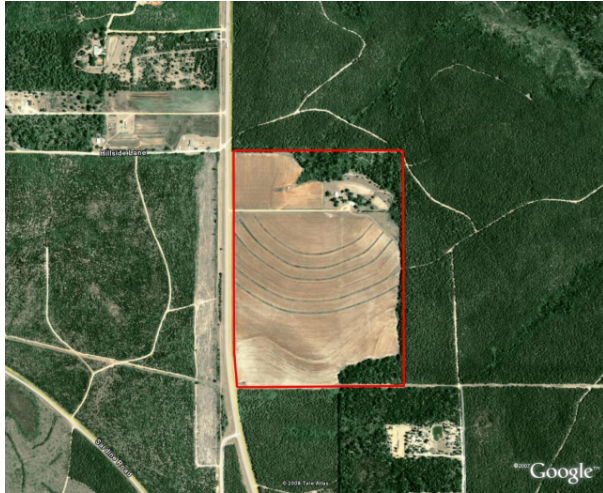


# Site Profile

## Alabama Site Selection Database

**110 acres-BP**

City: Flomaton County: Escambia



<b>Site Id: 4537</b>	
<b>Street Address</b>	HWY 113
<b>Nearest City</b>	Flomaton
<b>Within City Limits</b>	No
<b>Zip Code</b>	
<b>Latitude</b>	31.0835
<b>Longitude</b>	-87.2758
<b>Located in Industrial Park</b>	No
<b>Park Name</b>	
<b>Within Enterprise Zone</b>	
<b>Within Favored Geographic Area</b>	
<b>Within Renewal Community</b>	

<b>Transportation</b>	
<b>Rail Service</b>	Provider: Track Status: Not Specified Provider #2: Track Status:
<b>Navigable Waterway</b>	Dock Facility: Not Specified
<b>Nearest Commercial Air City</b>	Pensacola, FL
	Miles to Nearest Service:

<b>Highways</b>	<u>Highway Type</u>	<u>Highway Name</u>	<u>Miles to Access</u>	<u>Four Lane</u>
-----------------	---------------------	---------------------	------------------------	------------------

<b>Price</b>	
<b>Sale Price</b>	\$10,000.00 per acre
<b>Land Lease Rate (Annual)</b>	
<b>Negotiable?</b>	
<b>Date Quoted</b>	Aug 15, 2011
<b>Price Comments</b>	

<b>General Site Data</b>	
<b>Total Acres</b>	110
<b>Available Acres</b>	110
<b>Additional Available</b>	
<b>Largest Tract</b>	
<b>Smallest Tract</b>	
<b>Protective Covenants</b>	
<b>Phase 1 Environmental</b>	
<b>Preliminary Geotechnical:</b>	
<b>Topography</b>	
<b>Preliminary Wetlands</b>	
<b>Assessment:</b>	
<b>Ecological Review:</b>	
<b>Cultural Resources Review:</b>	
<b>Zoning</b>	None
<b>Previous Use</b>	
<b>Previous Use Description</b>	Available Property

<b>Utilities</b>	
<b>Natural Gas</b>	Provider: Status: > 1 mile Size of Main: Main PSI:
<b>Water</b>	Provider: Status: > 1 mile Size of Main:
<b>Sewer</b>	Provider: Status: > 1 mile Size of Main:
<b>Electricity</b>	Provider #1: Southern Pine Electric Co-op Status: Existing Connection Service to Property (Distribution): Transmission: Provider #2:
<b>Telecommunications</b>	Provider: Fiber Optics: Redundancy: xDSL Available:

This information has been secured from sources we believe to be reliable; however, we make no representation or warranties, expressed or implied, as to the accuracy of the information.

Economic Development Partnership of Alabama  
www.edpa.org

# Site Profile

## Alabama Site Selection Database

**110 acres-BP**

City: Flomaton

County: Escambia

General Comments

*Site information is current as of 8/15/11*

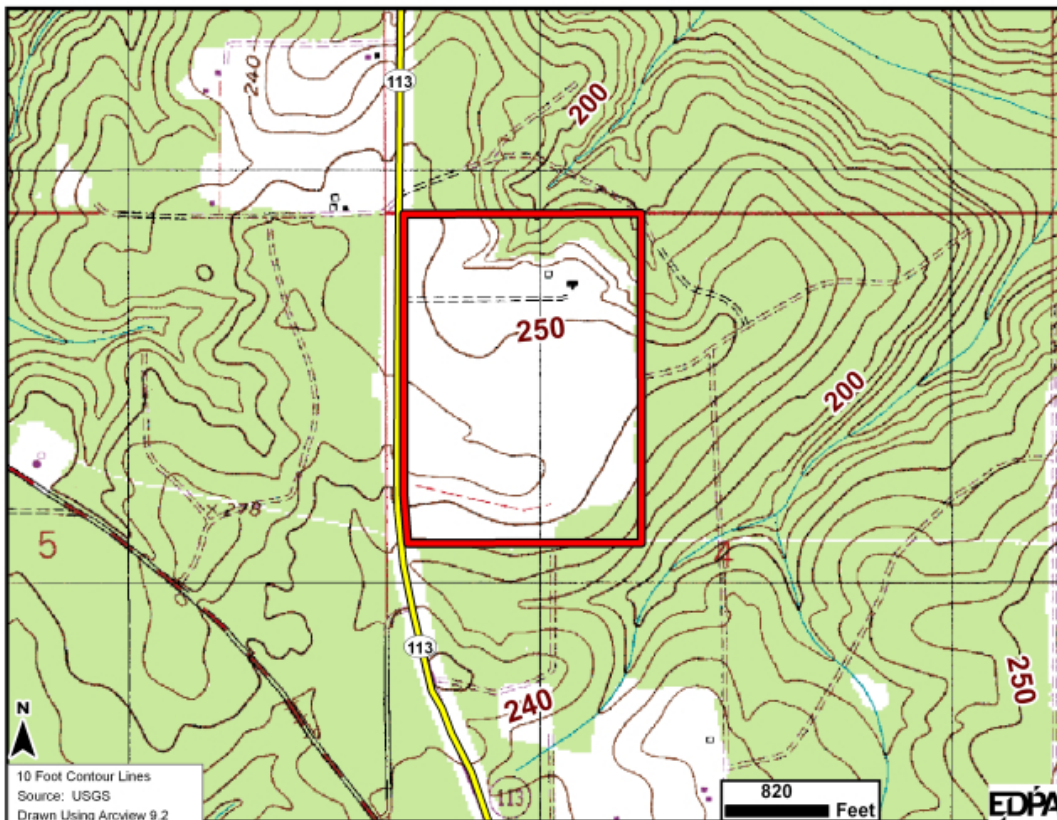
# Site Profile

## Alabama Site Selection Database

110 acres-BP

City: Flomaton

County: Escambia



This information has been secured from sources we believe to be reliable; however, we make no representation or warranties, expressed or implied, as to the accuracy of the information.

Economic Development Partnership of Alabama  
www.edpa.org

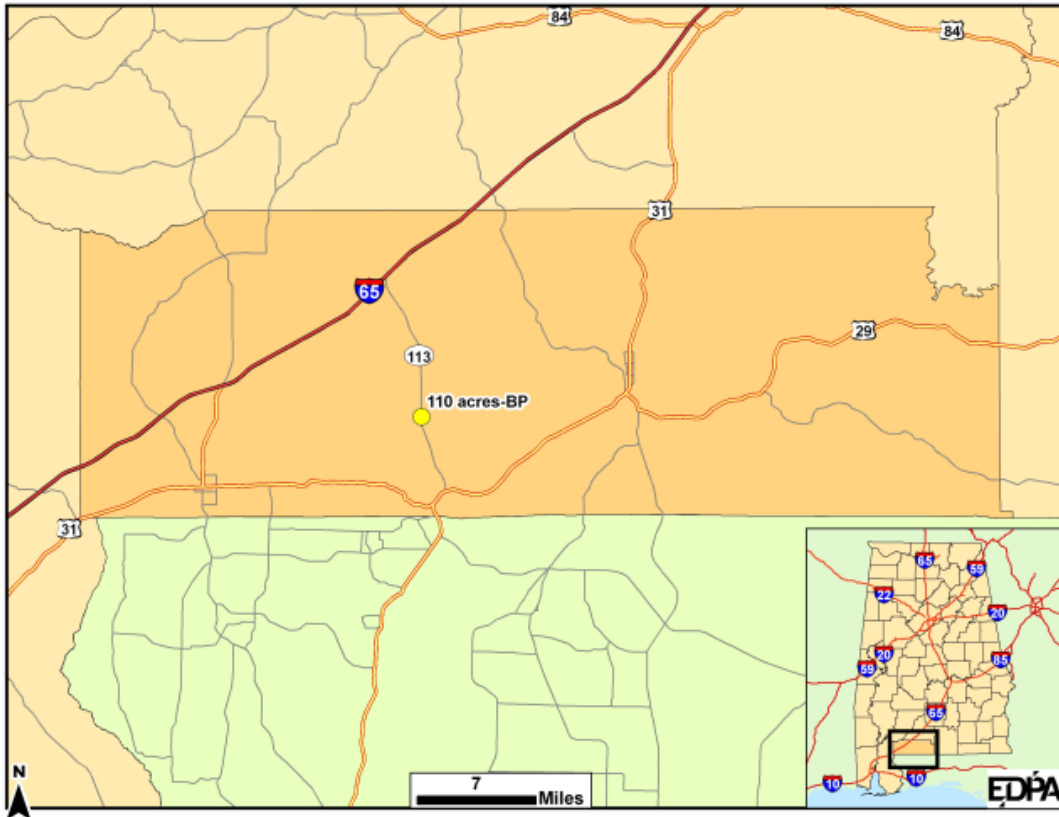
# Site Profile

## Alabama Site Selection Database

**110 acres-BP**

City: Flomaton

County: Escambia



This information has been secured from sources we believe to be reliable; however, we make no representation or warranties, expressed or implied, as to the accuracy of the information.

Economic Development Partnership of Alabama  
www.edpa.org