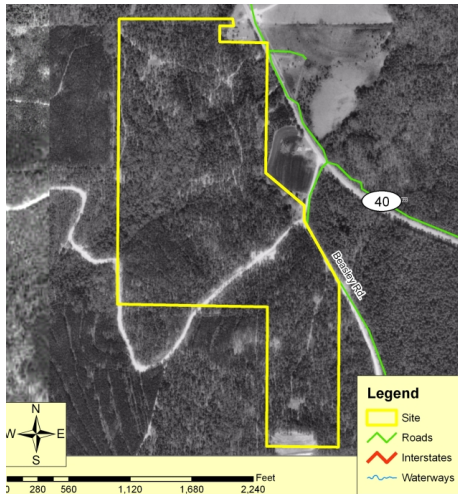


# Site Profile

## Alabama Site Selection Database

**111 Acres**

City: Flomaton County: Escambia



### General Site Data

<b>Total Acres</b>	111
<b>Available Acres</b>	111
<b>Additional Available</b>	
<b>Largest Tract</b>	
<b>Smallest Tract</b>	
<b>Protective Covenants</b>	
<b>Phase 1 Environmental</b>	
<b>Preliminary Geotechnical:</b>	
<b>Topography</b>	
<b>Preliminary Wetlands</b>	
<b>Assessment:</b>	
<b>Ecological Review:</b>	
<b>Cultural Resources Review:</b>	
<b>Zoning</b>	Unknown
<b>Previous Use</b>	
<b>Previous Use Description</b>	Available Property

### Utilities

#### Natural Gas

Provider: City of Brewton  
 Status: < 1 mile  
 Size of Main:  
 Main PSI:

#### Water

Provider: City of Brewton  
 Status: < 1 mile  
 Size of Main:

#### Sewer

Provider: City of Brewton  
 Status: < 1 mile  
 Size of Main:

#### Electricity

Provider #1: Alabama Power Company  
 Status: < 1 mile  
 Service to Property  
 (Distribution):  
 Transmission:  
 Provider #2: PowerSouth

#### Telecommunications

Provider: AT&T  
 Fiber Optics:  
 Redundancy:  
 xDSL Available:

**Site Id:** 4403

**Street Address** Beasley Road, HWY 40

**Nearest City** Flomaton

**Within City Limits** No

**Zip Code** 36426

**Latitude** 31.2085

**Longitude** -87.2803

**Located in Industrial Park** No

**Park Name**

**Within Enterprise Zone** No

**Within Favored Geographic Area**

**Within Renewal Community**

### Transportation

#### Rail Service

Provider:  
 Track Status: Not Specified  
 Provider #2:  
 Track Status:

#### Navigable Waterway

Dock Facility: Not Specified

**Nearest Commercial Air City** Pensacola, FL

Miles to Nearest Service:

### Highways

#### Highway Type

Interstate

#### Highway Name

I-65

#### Miles to Access

5.0

#### Four Lane

### Price

**Sale Price** \$10,000.00 per acre

### Land Lease Rate (Annual)

### Negotiable?

**Date Quoted** Feb 7, 2012

### Price Comments

Total asking price is: \$ 1,776,000.00

This information has been secured from sources we believe to be reliable; however, we make no representation or warranties, expressed or implied, as to the accuracy of the information.

Economic Development Partnership of Alabama  
[www.edpa.org](http://www.edpa.org)

# Site Profile

## Alabama Site Selection Database

**111 Acres**

City: Flomaton

County: Escambia

### General Comments

Type of Road access: Frontage on HWY 40 and Beasley Road  
There are mature pines on the property.

*Site information is current as of 2/7/12*

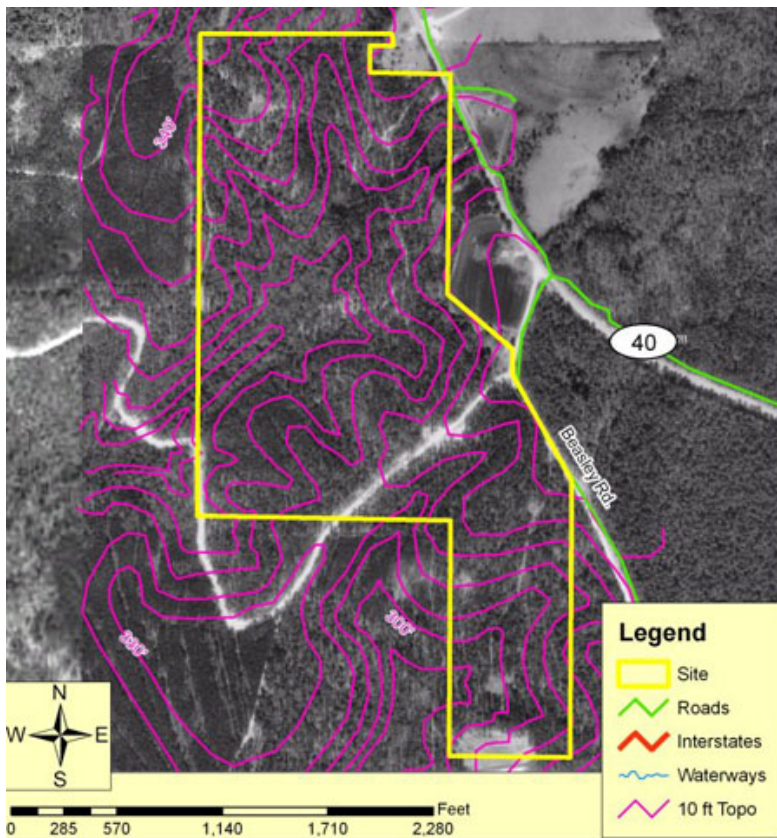
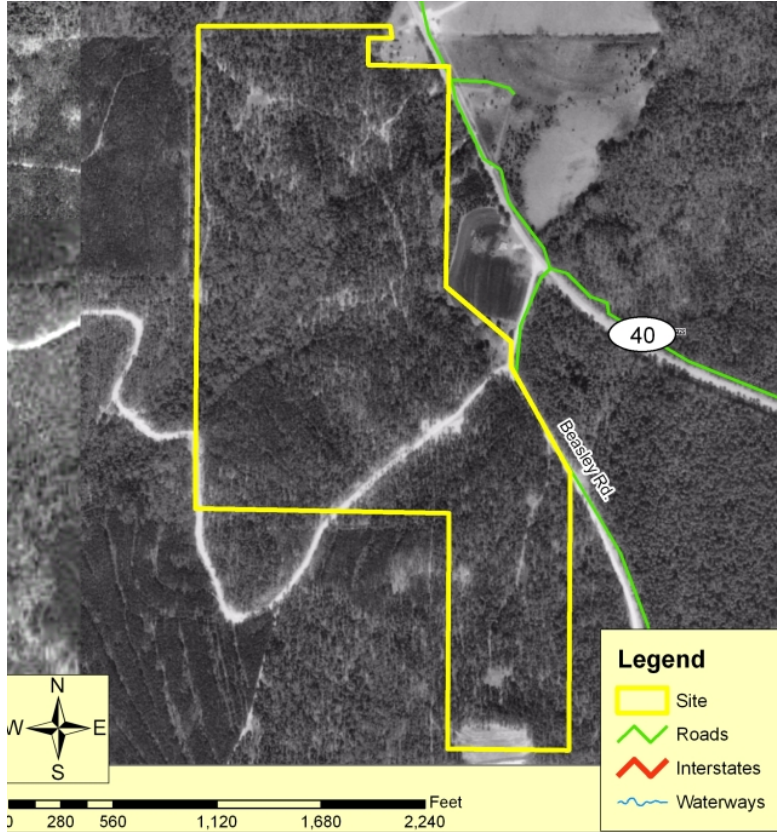
# Site Profile

## Alabama Site Selection Database

111 Acres

City: Flomaton

County: Escambia



This information has been secured from sources we believe to be reliable; however, we make no representation or warranties, expressed or implied, as to the accuracy of the information.

Economic Development Partnership of Alabama  
www.edpa.org

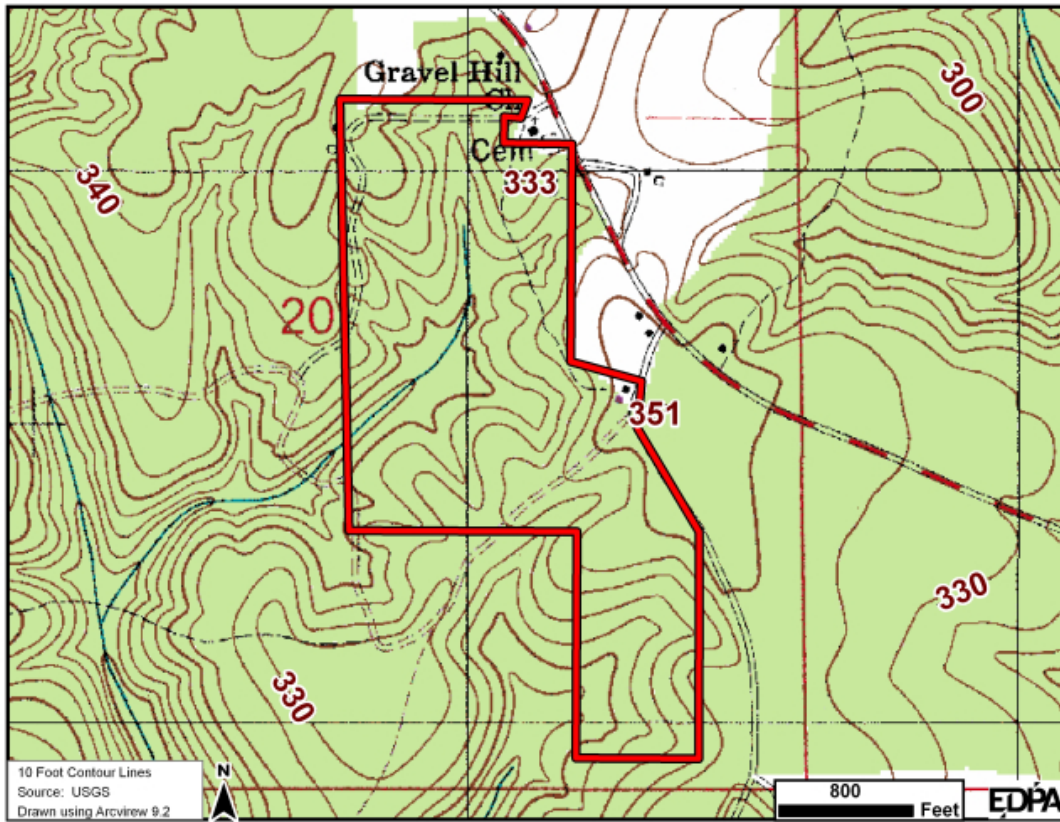
# Site Profile

## Alabama Site Selection Database

111 Acres

City: Flomaton

County: Escambia



This information has been secured from sources we believe to be reliable; however, we make no representation or warranties, expressed or implied, as to the accuracy of the information.

Economic Development Partnership of Alabama  
www.edpa.org

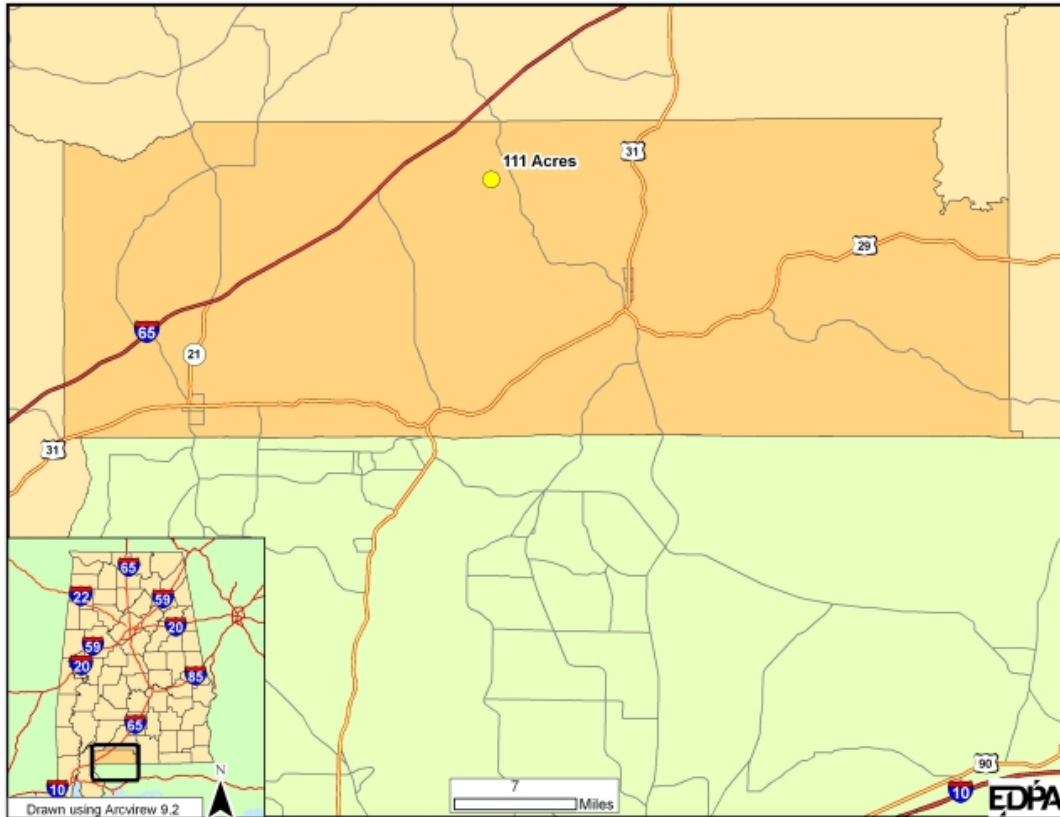
# Site Profile

## Alabama Site Selection Database

**111 Acres**

City: Flomaton

County: Escambia



This information has been secured from sources we believe to be reliable; however, we make no representation or warranties, expressed or implied, as to the accuracy of the information.

Economic Development Partnership of Alabama  
[www.edpa.org](http://www.edpa.org)