

# Site Profile

## Alabama Site Selection Database

### 81 acres-Champion

City: Flomaton    County: Escambia



<b>Site Id: 4536</b>	
<b>Street Address</b>	Hwy 113
<b>Nearest City</b>	Flomaton
<b>Within City Limits</b>	No
<b>Zip Code</b>	
<b>Latitude</b>	31.0908
<b>Longitude</b>	-87.2767
<b>Located in Industrial Park</b>	No
<b>Park Name</b>	
<b>Within Enterprise Zone</b>	
<b>Within Favored Geographic Area</b>	
<b>Within Renewal Community</b>	

<b>Transportation</b>	
<b>Rail Service</b>	Provider: Track Status: Not Available Provider #2: Track Status:

<b>Navigable Waterway</b>	Dock Facility: Port > 50 miles
<b>Nearest Commercial Air City</b>	Pensacola, FL
<b>Miles to Nearest Service:</b>	

<b>Highways</b>	<u>Highway Type</u>	<u>Highway Name</u>	<u>Miles to Access</u>	<u>Four Lane</u>
	Interstate	I-65	5.0	

<b>Price</b>	
<b>Sale Price</b>	\$10,000.00 per acre
<b>Land Lease Rate (Annual)</b>	
<b>Negotiable?</b>	
<b>Date Quoted</b>	May 2, 2011
<b>Price Comments</b>	

<b>General Site Data</b>	
<b>Total Acres</b>	81
<b>Available Acres</b>	81
<b>Additional Available</b>	
<b>Largest Tract</b>	81
<b>Smallest Tract</b>	81
<b>Protective Covenants</b>	
<b>Phase 1 Environmental</b>	No
<b>Preliminary Geotechnical:</b>	
<b>Topography</b>	
<b>Preliminary Wetlands</b>	
<b>Assessment:</b>	
<b>Ecological Review:</b>	
<b>Cultural Resources Review:</b>	
<b>Zoning</b>	None
<b>Previous Use</b>	Forest
<b>Previous Use Description</b>	pines on property

<b>Utilities</b>	
<b>Natural Gas</b>	Provider: City of Brewton Status: > 1 mile Size of Main: Main PSI:
<b>Water</b>	Provider: City of Brewton Status: > 1 mile Size of Main:
<b>Sewer</b>	Provider: City of Brewton Status: > 1 mile Size of Main:
<b>Electricity</b>	Provider #1: Southern Pine Electric Co-op Status: > 1 mile Service to Property (Distribution): Transmission: Provider #2:
<b>Telecommunications</b>	Provider: Fiber Optics: Redundancy: xDSL Available:

# Site Profile

## Alabama Site Selection Database

### 81 acres-Champion

City: Flomaton

County: Escambia

#### General Comments

Property is located at the 7 mile marker on HWY 113.

*Site information is current as of 5/2/11*

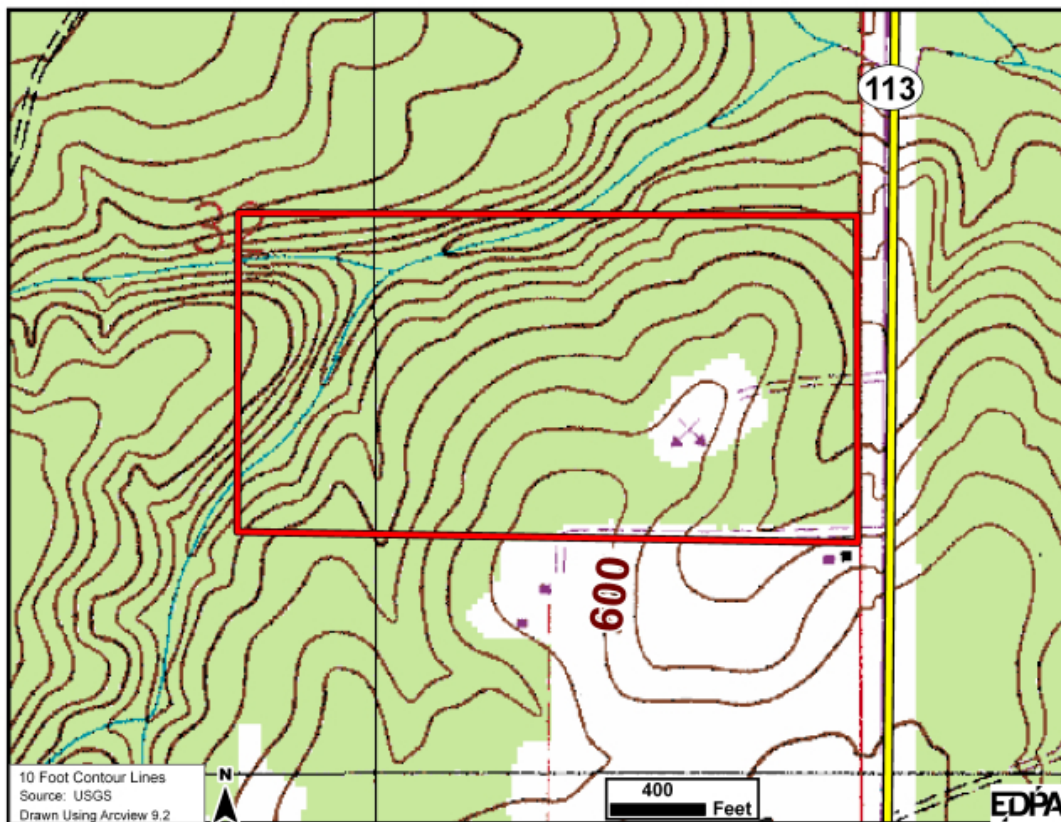
# Site Profile

## Alabama Site Selection Database

**81 acres-Champion**

City: Flomaton

County: Escambia



This information has been secured from sources we believe to be reliable; however, we make no representation or warranties, expressed or implied, as to the accuracy of the information.

Economic Development Partnership of Alabama  
www.edpa.org

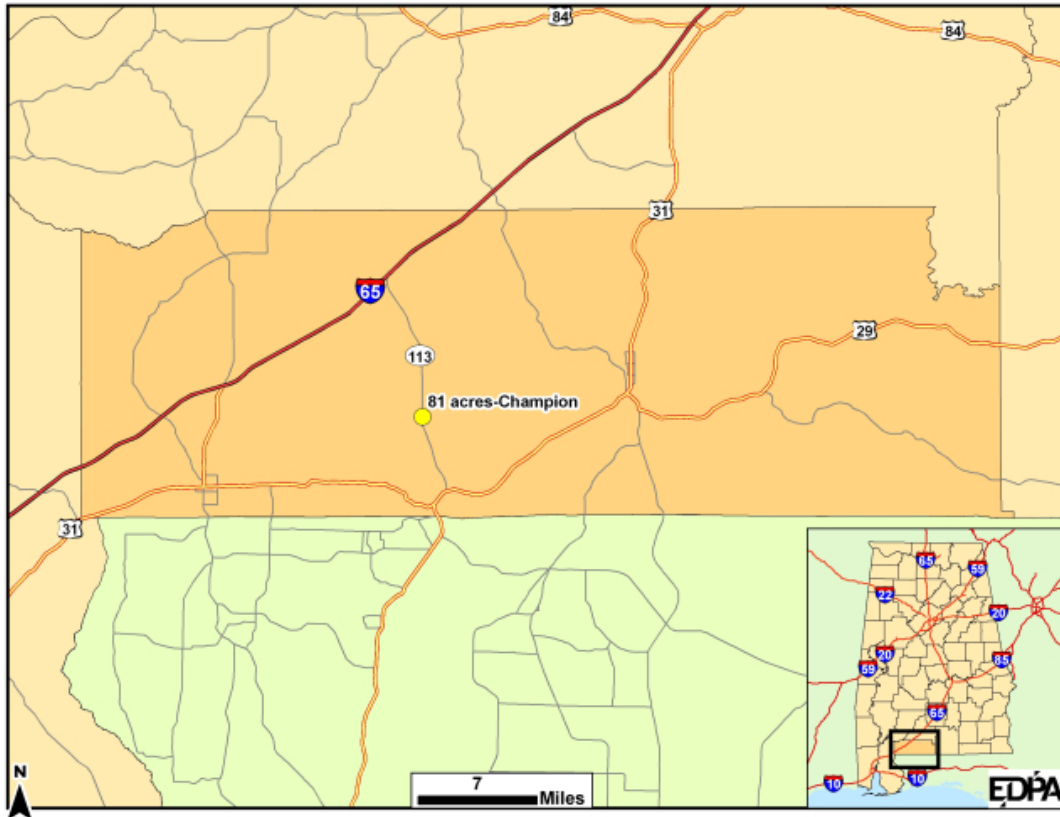
# Site Profile

## Alabama Site Selection Database

**81 acres-Champion**

City: Flomaton

County: Escambia



This information has been secured from sources we believe to be reliable; however, we make no representation or warranties, expressed or implied, as to the accuracy of the information.

Economic Development Partnership of Alabama  
www.edpa.org