

# Site Profile

## Alabama Site Selection Database

### Jordan Property

City: Monroeville      County: Monroe



<b>Site Id: 4502</b>	
<b>Street Address</b>	Hwy 21
<b>Nearest City</b>	Monroeville
<b>Within City Limits</b>	No
<b>Zip Code</b>	36460
<b>Latitude</b>	31.3947
<b>Longitude</b>	-87.4284
<b>Located in Industrial Park</b>	No
<b>Park Name</b>	
<b>Within Enterprise Zone</b>	Yes
<b>Within Favored Geographic Area</b>	Yes
<b>Within Renewal Community</b>	No

<b>Transportation</b>	
<b>Rail Service</b>	
Provider:	A & G Railroad Co
Track Status:	Adjacent Track
Provider #2:	
Track Status:	
<b>Navigable Waterway</b>	Alabama River
Dock Facility:	Port 11 to 25 miles
<b>Nearest Commercial Air City</b>	Mobile, AL
Miles to Nearest Service:	95

<b>Highways</b>			
<u>Highway Type</u>	<u>Highway Name</u>	<u>Miles to Access</u>	<u>Four Lane</u>
Interstate	I-65	30.0	
Federal Highway	84	10.0	No
Alabama Highway	21	0.0	No

<b>Price</b>	
<b>Sale Price</b>	\$4,500.00 per acre
<b>Land Lease Rate (Annual)</b>	
<b>Negotiable?</b>	No
<b>Date Quoted</b>	Jan 12, 2012
<b>Price Comments</b>	
The property is served by the Alabama Gulf Coast Railroad (Rail America)	

<b>General Site Data</b>	
<b>Total Acres</b>	99
<b>Available Acres</b>	99
<b>Additional Available</b>	No
<b>Largest Tract</b>	57
<b>Smallest Tract</b>	16
<b>Protective Covenants</b>	
<b>Phase 1 Environmental</b>	No
<b>Preliminary Geotechnical:</b>	No
<b>Topography</b>	Flat
<b>Preliminary Wetlands</b>	No
<b>Assessment:</b>	
<b>Ecological Review:</b>	No
<b>Cultural Resources Review:</b>	No
<b>Zoning</b>	None
<b>Previous Use</b>	Agriculture
<b>Previous Use Description</b>	Farm land

<b>Utilities</b>	
<b>Natural Gas</b>	
Provider:	South Alabama Gas
Status:	< 1 mile
Size of Main:	6 in.
Main PSI:	360
<b>Water</b>	
Provider:	Uriah Water System
Status:	< 1 mile
Size of Main:	6 in.
<b>Sewer</b>	
Provider:	
Status:	Unavailable
Size of Main:	
<b>Electricity</b>	
Provider #1:	Southern Pine Electric Co-op
Status:	< 1 mile
Service to Property (Distribution):	Yes
Transmission:	
Provider #2:	PowerSouth
<b>Telecommunications</b>	
Provider:	Frontier Communications
Fiber Optics:	No
Redundancy:	Yes
xDSL Available:	Yes

# Site Profile

## Alabama Site Selection Database

**Jordan Property**

City: Monroeville

County: Monroe

General Comments

*Site information is current as of 1/12/12*

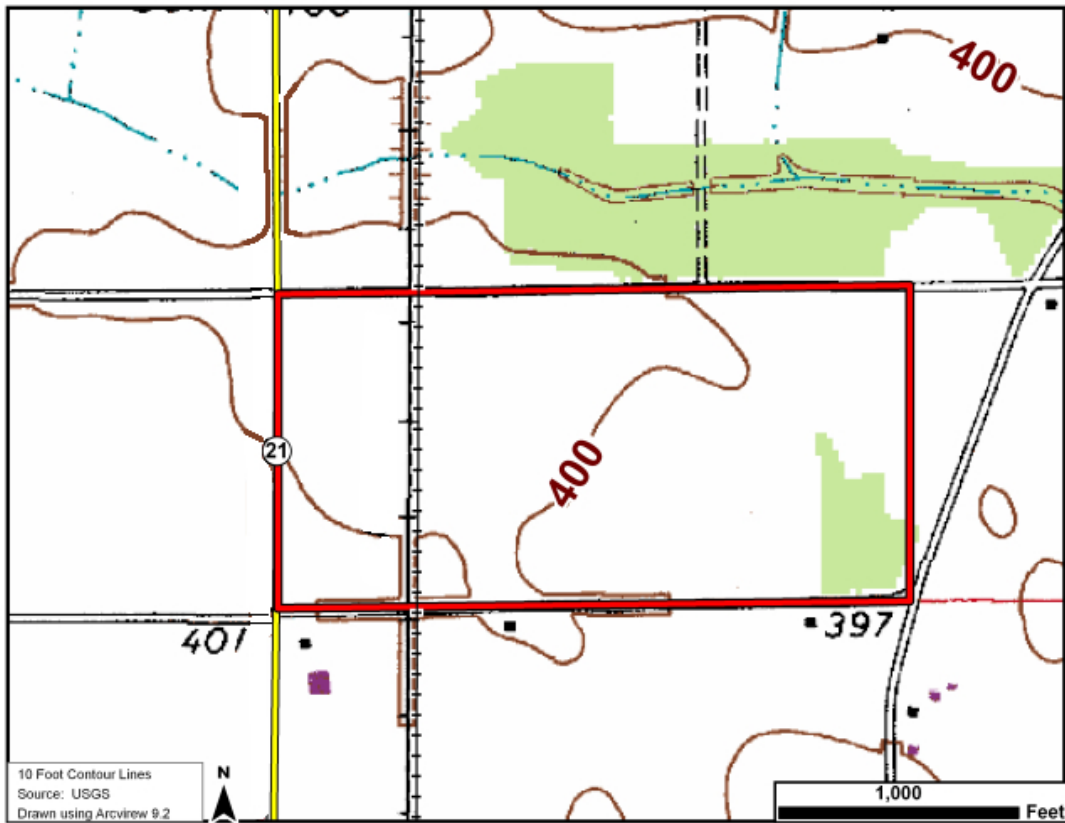
# Site Profile

## Alabama Site Selection Database

**Jordan Property**

City: Monroeville

County: Monroe



This information has been secured from sources we believe to be reliable; however, we make no representation or warranties, expressed or implied, as to the accuracy of the information.

Economic Development Partnership of Alabama  
www.edpa.org

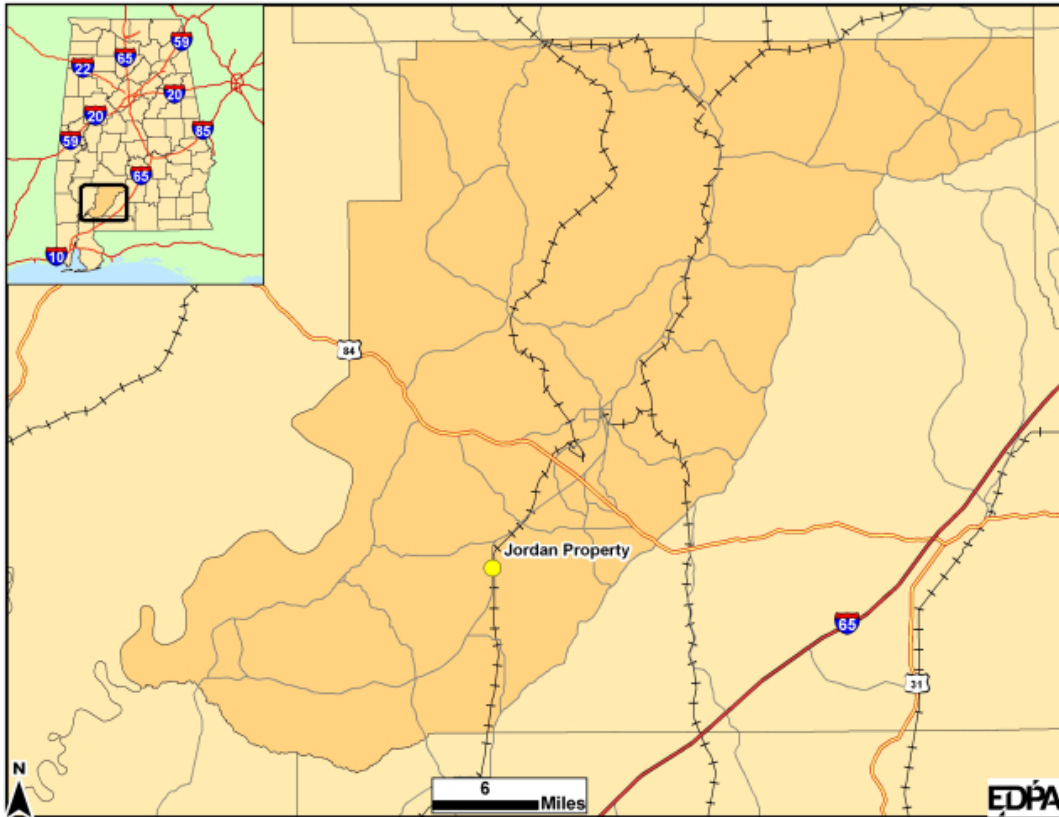
# Site Profile

## Alabama Site Selection Database

### Jordan Property

City: Monroeville

County: Monroe



This information has been secured from sources we believe to be reliable; however, we make no representation or warranties, expressed or implied, as to the accuracy of the information.

Economic Development Partnership of Alabama  
www.edpa.org