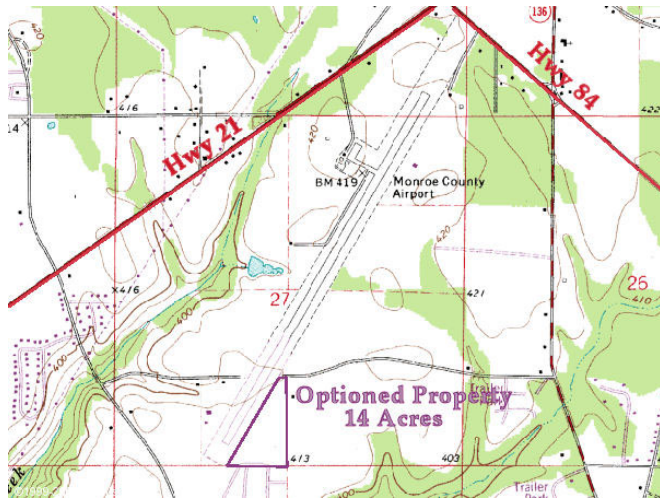


Site Profile

Alabama Site Selection Database

Scruggs Property

City: Monroeville County: Monroe



Site Id: 4503
Street Address: Monroe County Airport

Nearest City: Monroeville
Within City Limits: No
Zip Code: 36460
Latitude: 31.4538
Longitude: -87.3566
Located in Industrial Park: No
Park Name:
Within Enterprise Zone: Yes
Within Favored Geographic Area: Yes
Within Renewal Community: No

Transportation

Rail Service:
 Provider:
 Track Status: Not Specified
 Provider #2:
 Track Status:

Navigable Waterway: Alabama River
 Dock Facility: Port 11 to 25 miles

Nearest Commercial Air City: Mobile, AL
 Miles to Nearest Service: 95

Highways

Highway Type	Highway Name	Miles to Access	Four Lane
Interstate	I-10	80.0	
Interstate	I-65	30.0	
Federal Highway	21	0.5	No
Federal Highway	84	1.0	No

Price

Sale Price: \$10,000.00 per acre

Land Lease Rate (Annual)

Negotiable?

Date Quoted: Jun 19, 2009

Price Comments

General Site Data

Total Acres: 14
Available Acres: 14
Additional Available: Yes
Largest Tract: 14
Smallest Tract: 14
Protective Covenants:
Phase 1 Environmental: No
Preliminary Geotechnical:
Topography: Flat
Preliminary Wetlands Assessment:
Ecological Review:
Cultural Resources Review:
Zoning: None
Previous Use: Agriculture
Previous Use Description: agriculture

Utilities

Natural Gas:
 Provider: South Alabama Gas
 Status: < 1 mile
 Size of Main:
 Main PSI:

Water:
 Provider: City of Monroeville
 Status: < 1 mile
 Size of Main:

Sewer:
 Provider: City of Monroeville
 Status: < 1 mile
 Size of Main:

Electricity:
 Provider #1: Alabama Power Company
 Status: < 1 mile
 Service to Property (Distribution):
 Transmission:
 Provider #2: PowerSouth

Telecommunications:
 Provider: Frontier Communications
 Fiber Optics:
 Redundancy:
 xDSL Available:

Site Profile

Alabama Site Selection Database

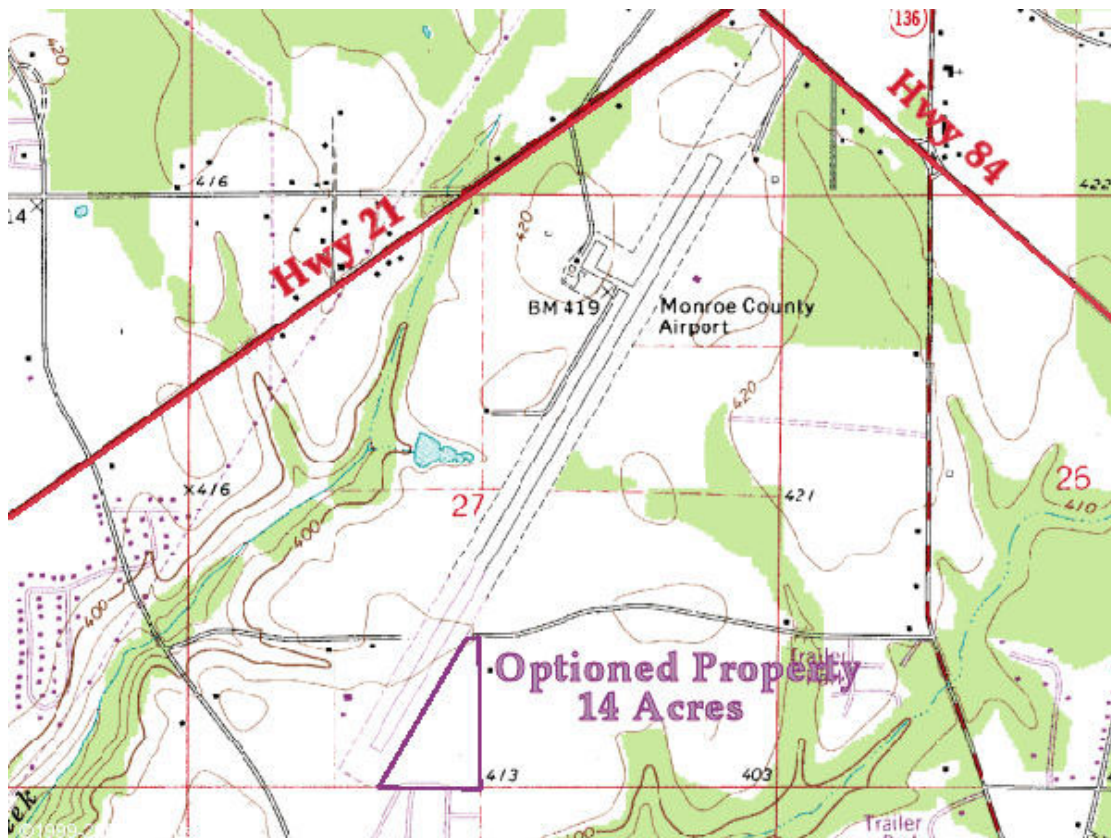
Scruggs Property

City: Monroeville

County: Monroe

General Comments

Site information is current as of 6/19/09



This information has been secured from sources we believe to be reliable; however, we make no representation or warranties, expressed or implied, as to the accuracy of the information.

Economic Development Partnership of Alabama
www.advantagealabama.com

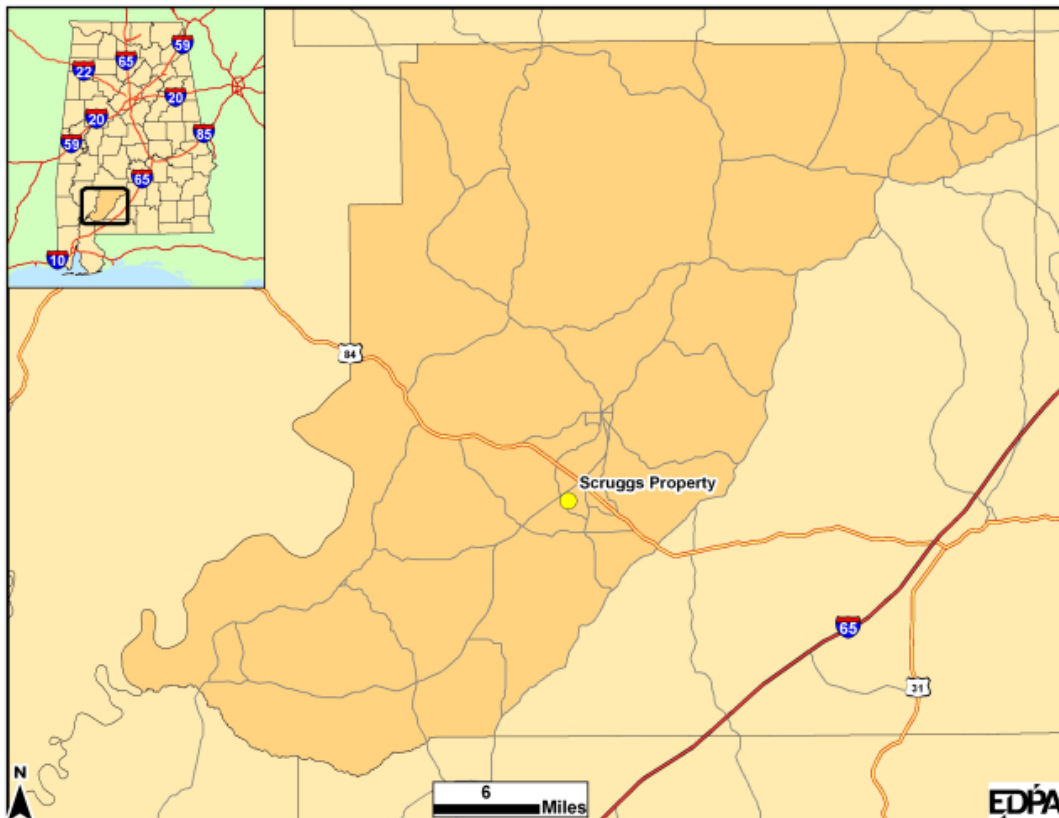
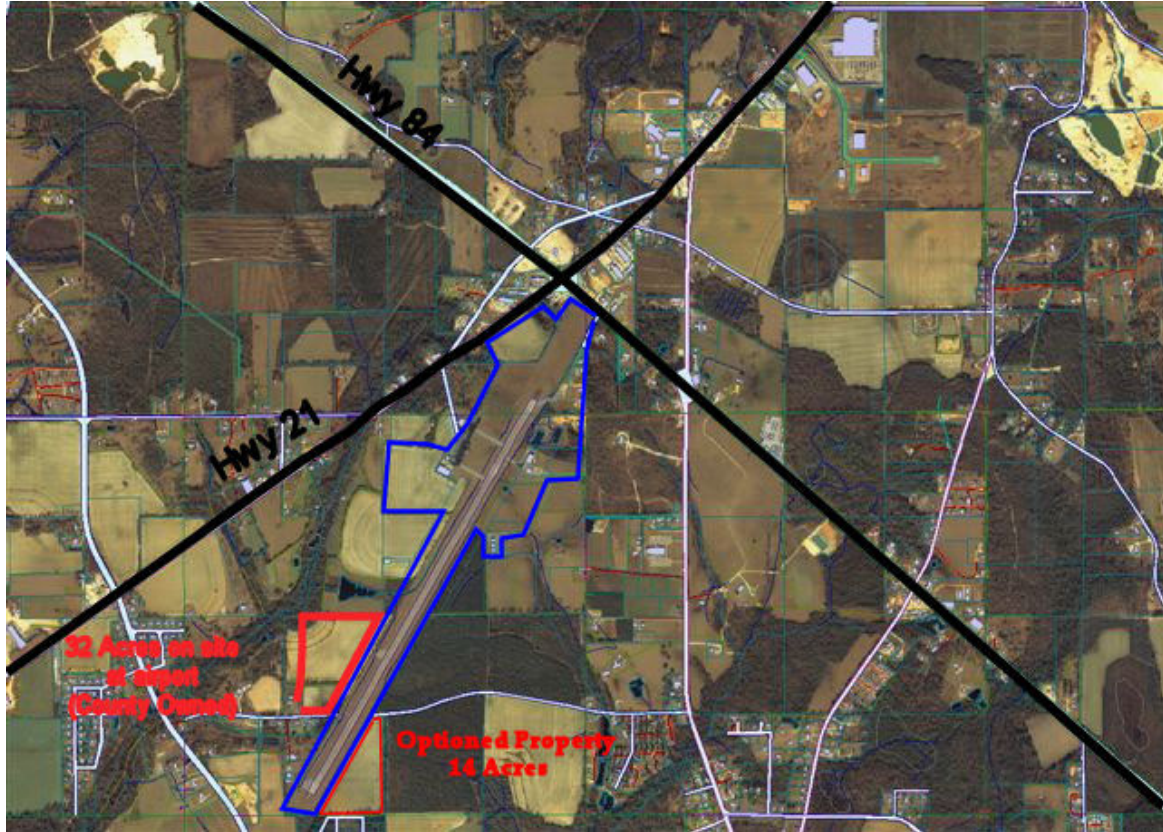
Site Profile

Alabama Site Selection Database

Scruggs Property

City: Monroeville

County: Monroe



This information has been secured from sources we believe to be reliable; however, we make no representation or warranties, expressed or implied, as to the accuracy of the information.

Economic Development Partnership of Alabama
www.advantagealabama.com